

V súvislosti s týmto podujatím nemám žiaden konflikt záujmov.

# Prípad SD-IAP č. 725

Marián Švajdler

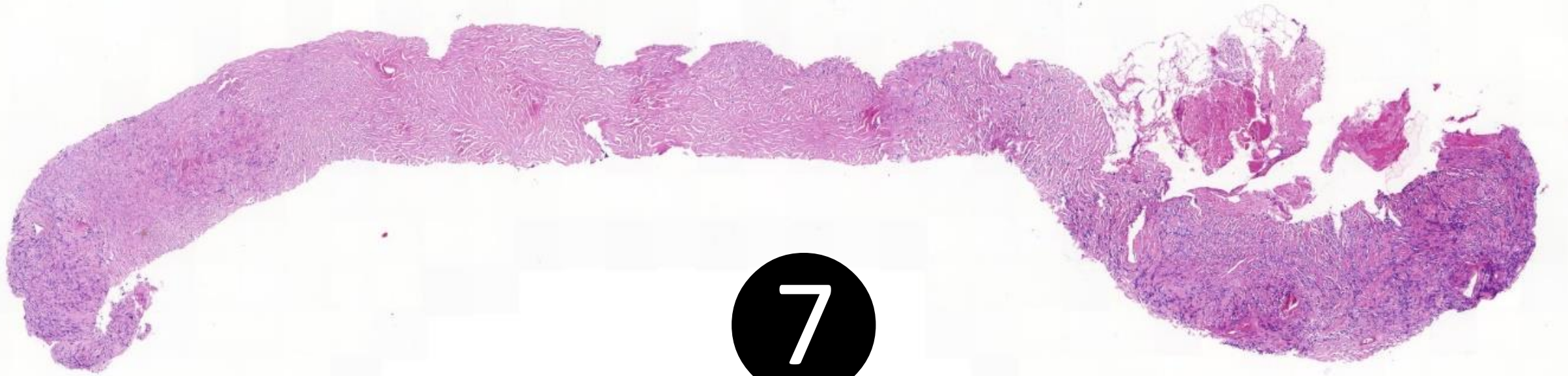


# Klinické údaje

- 74-ročný muž
- suspektný palpačný nález na prostate
- systematická biopsia prostaty, 14 vzoriek
- vzorky 7, 8 a 9 zo suspektného ložiska v pravom laloku prostaty

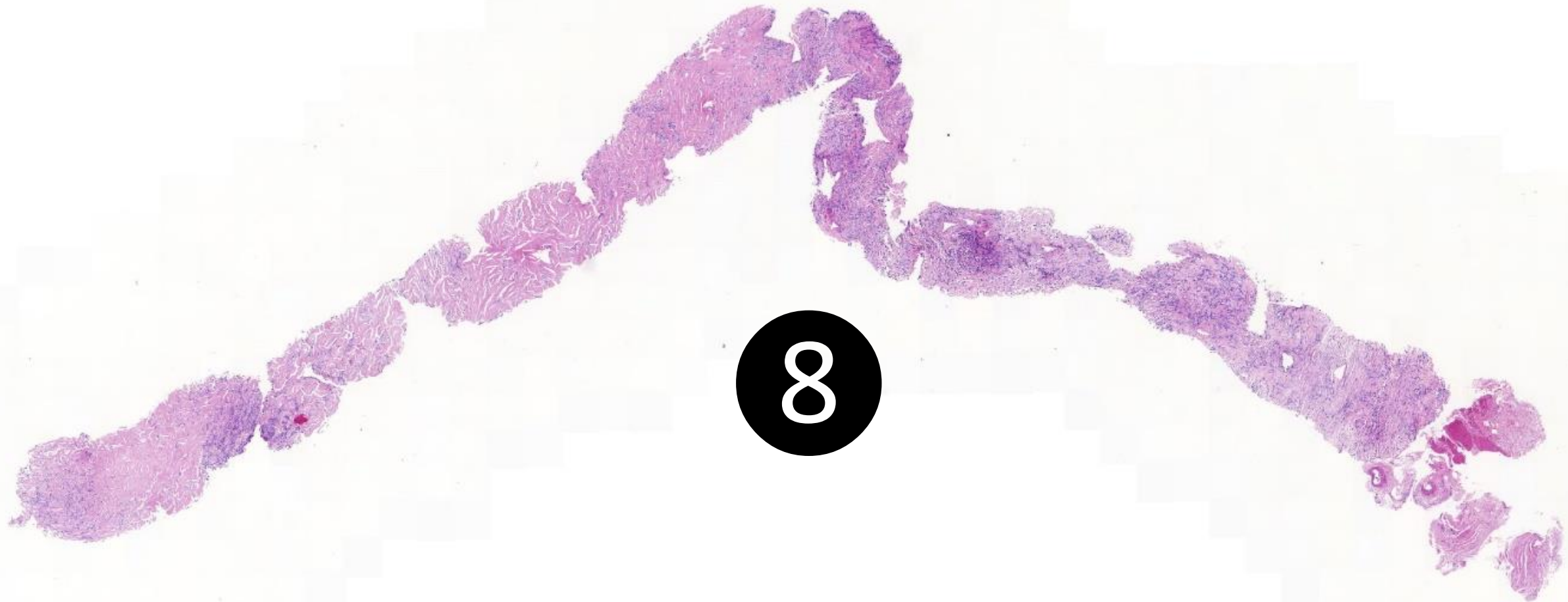


500 μm



7

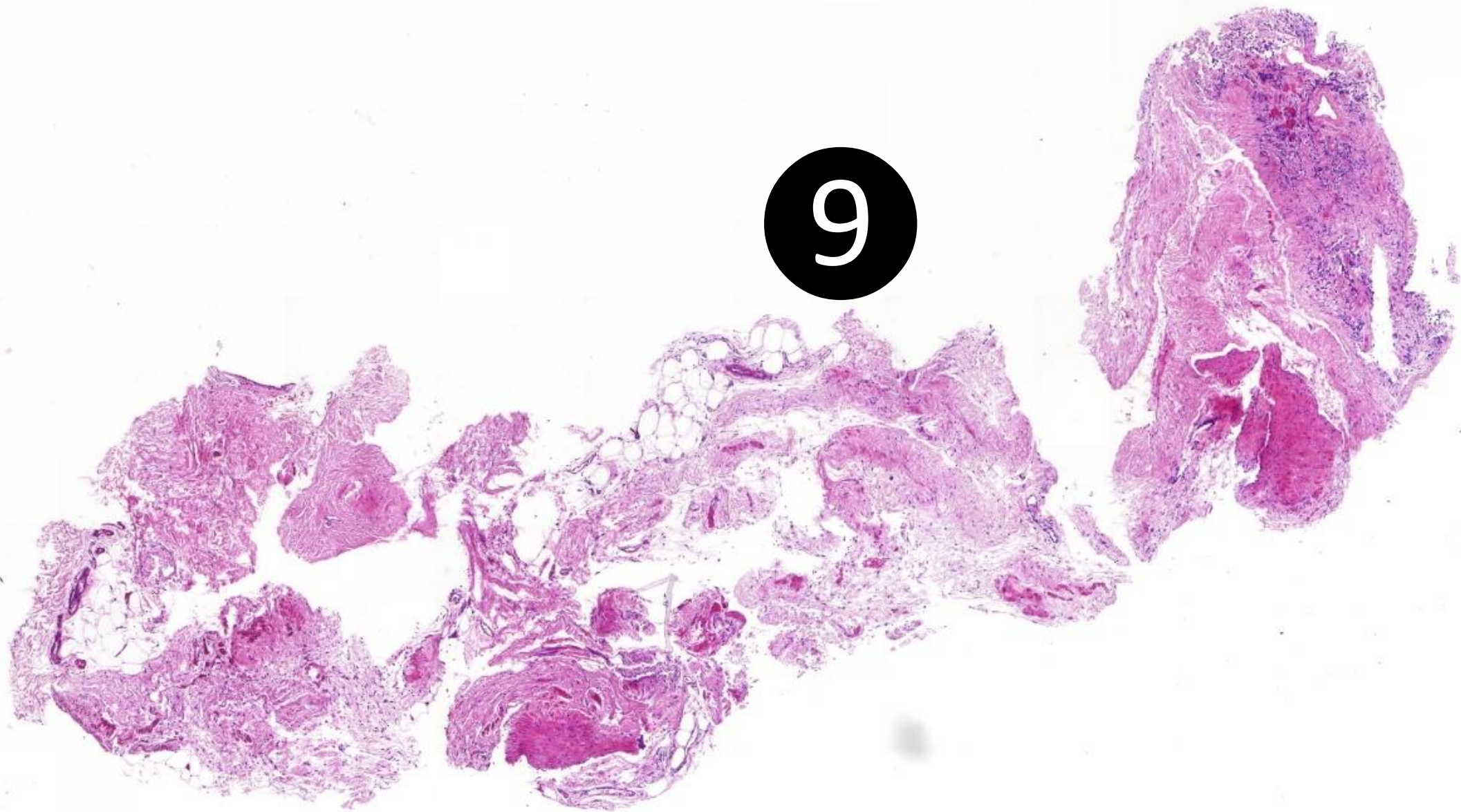
500 μm



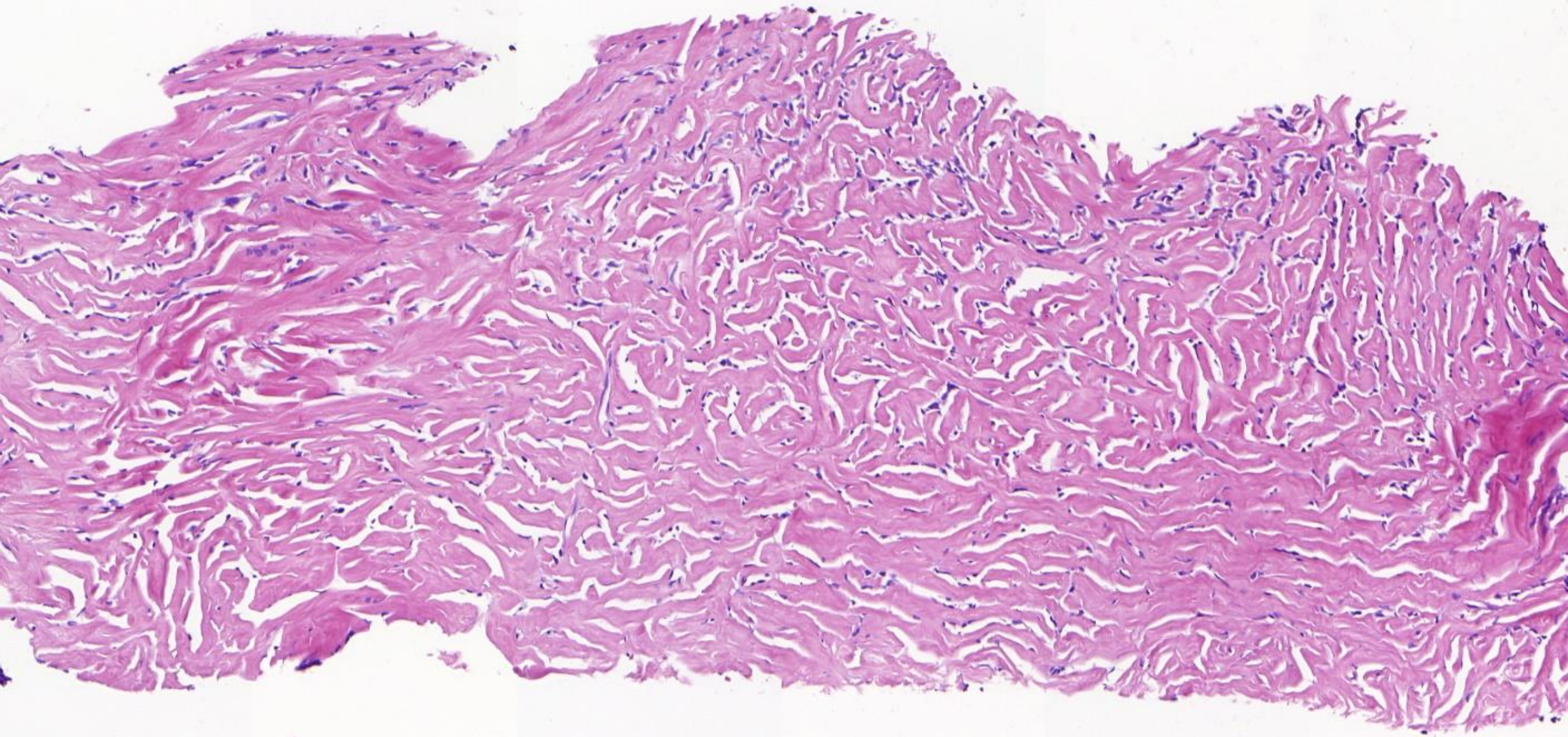
8

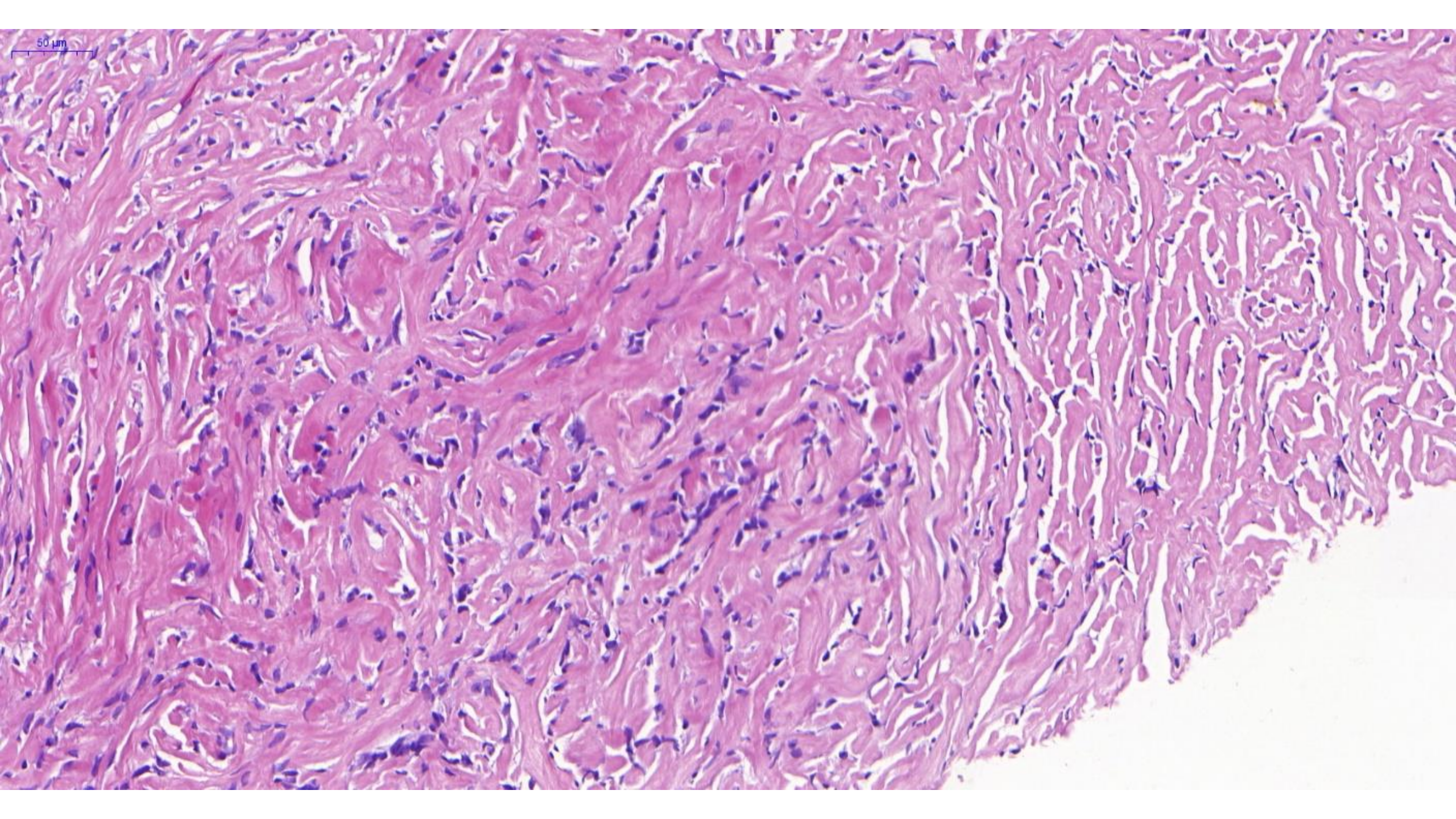
500  $\mu$ m

9

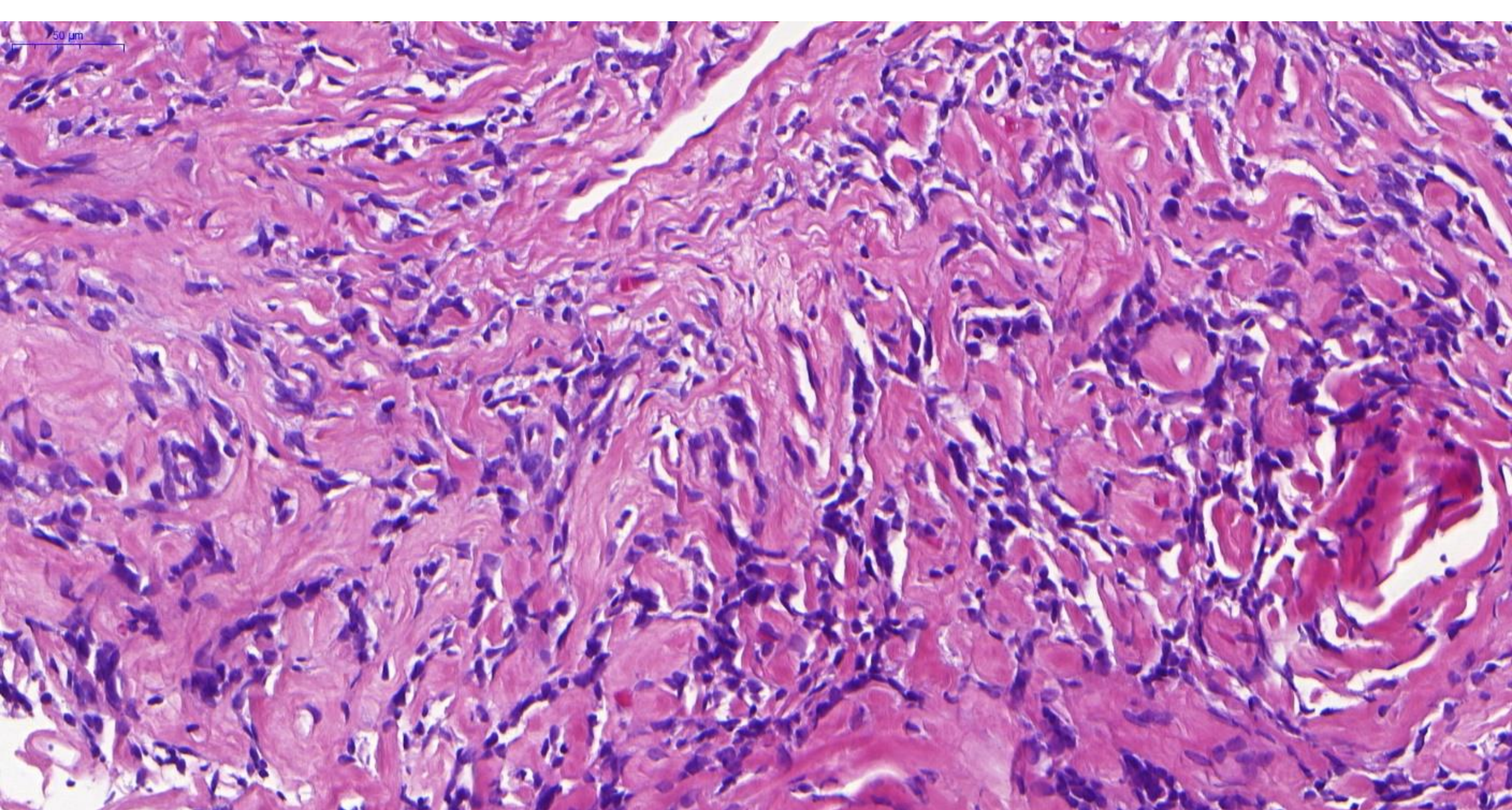


100  $\mu$ m

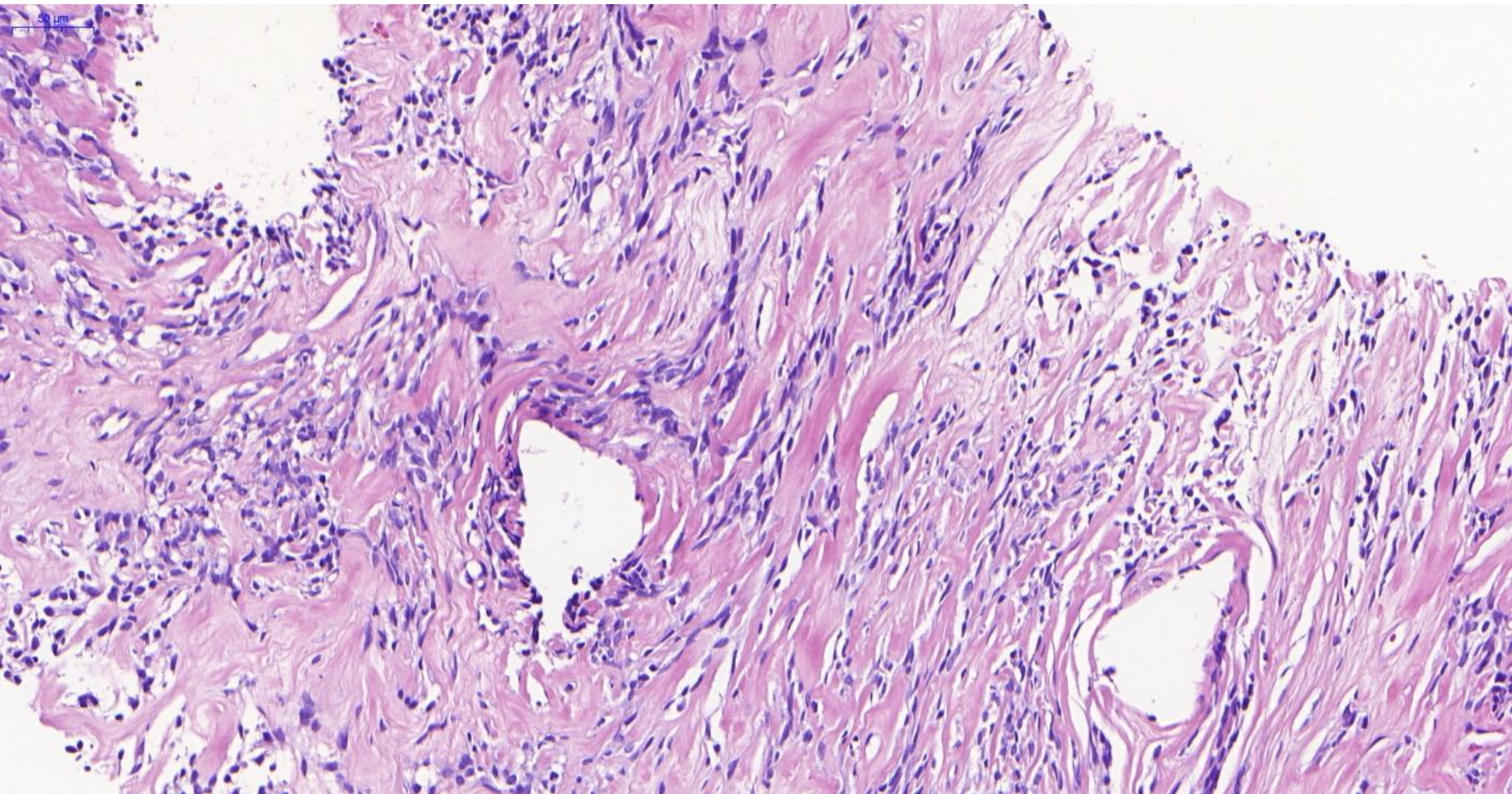


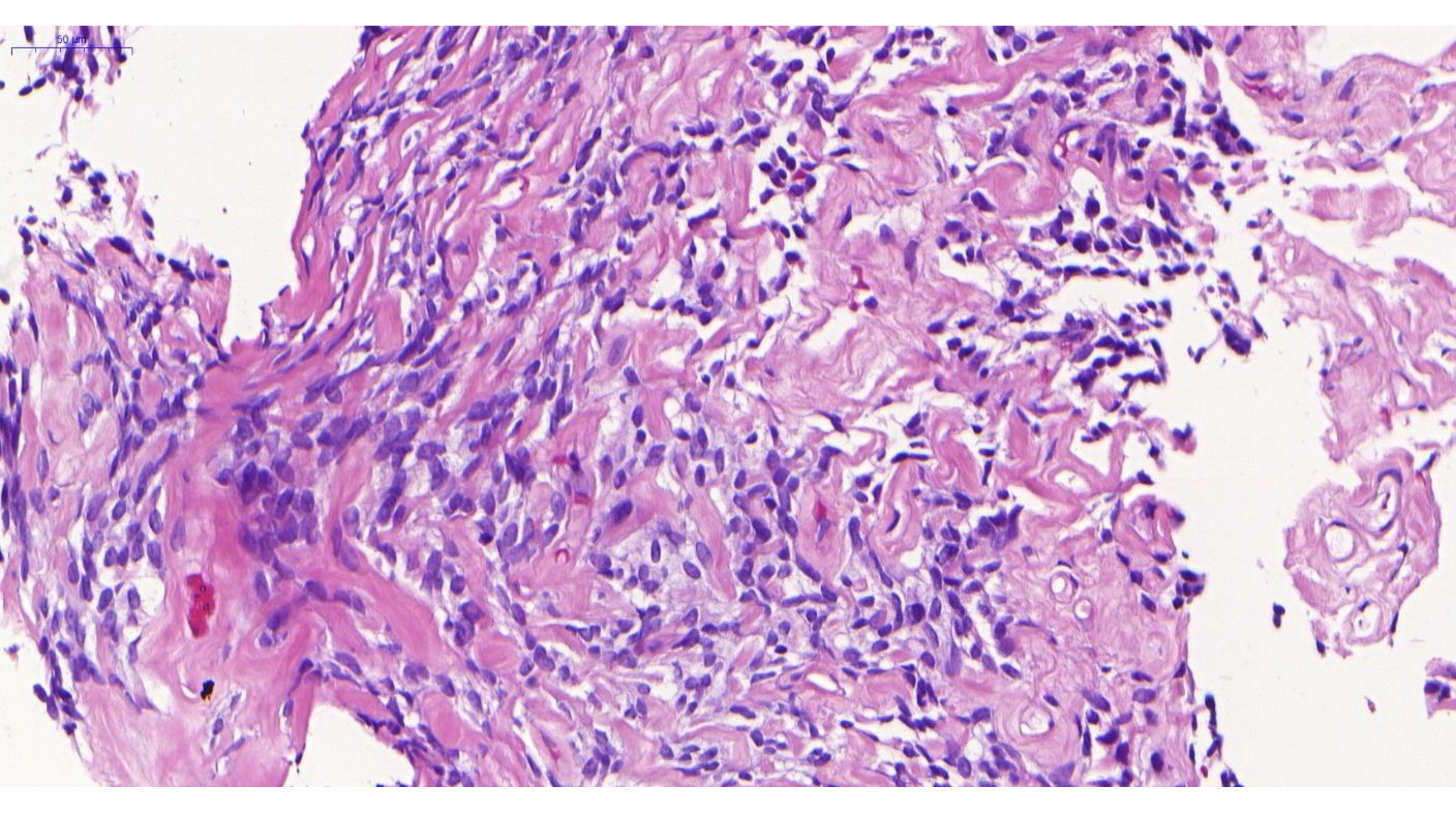


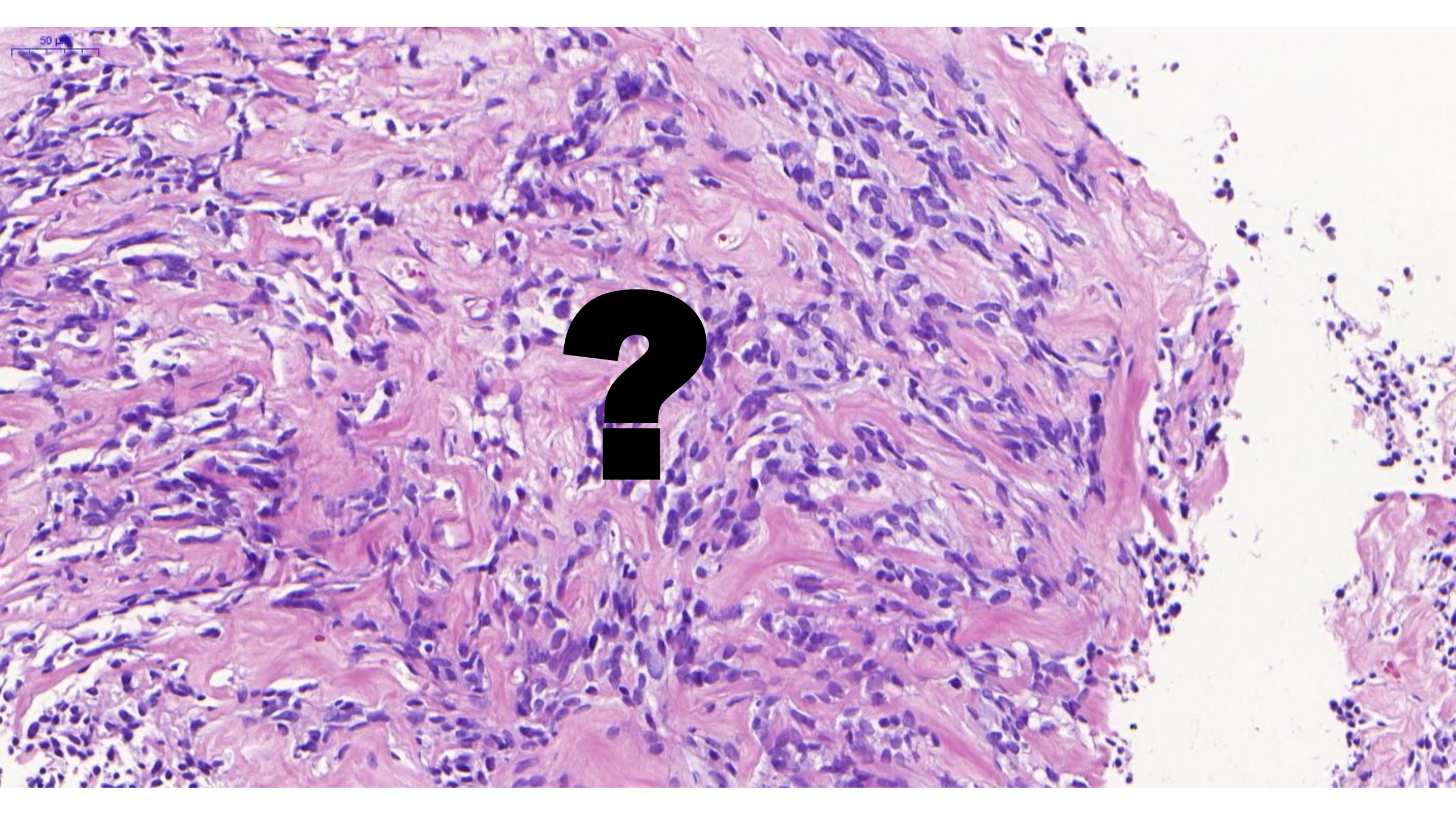




50 μm



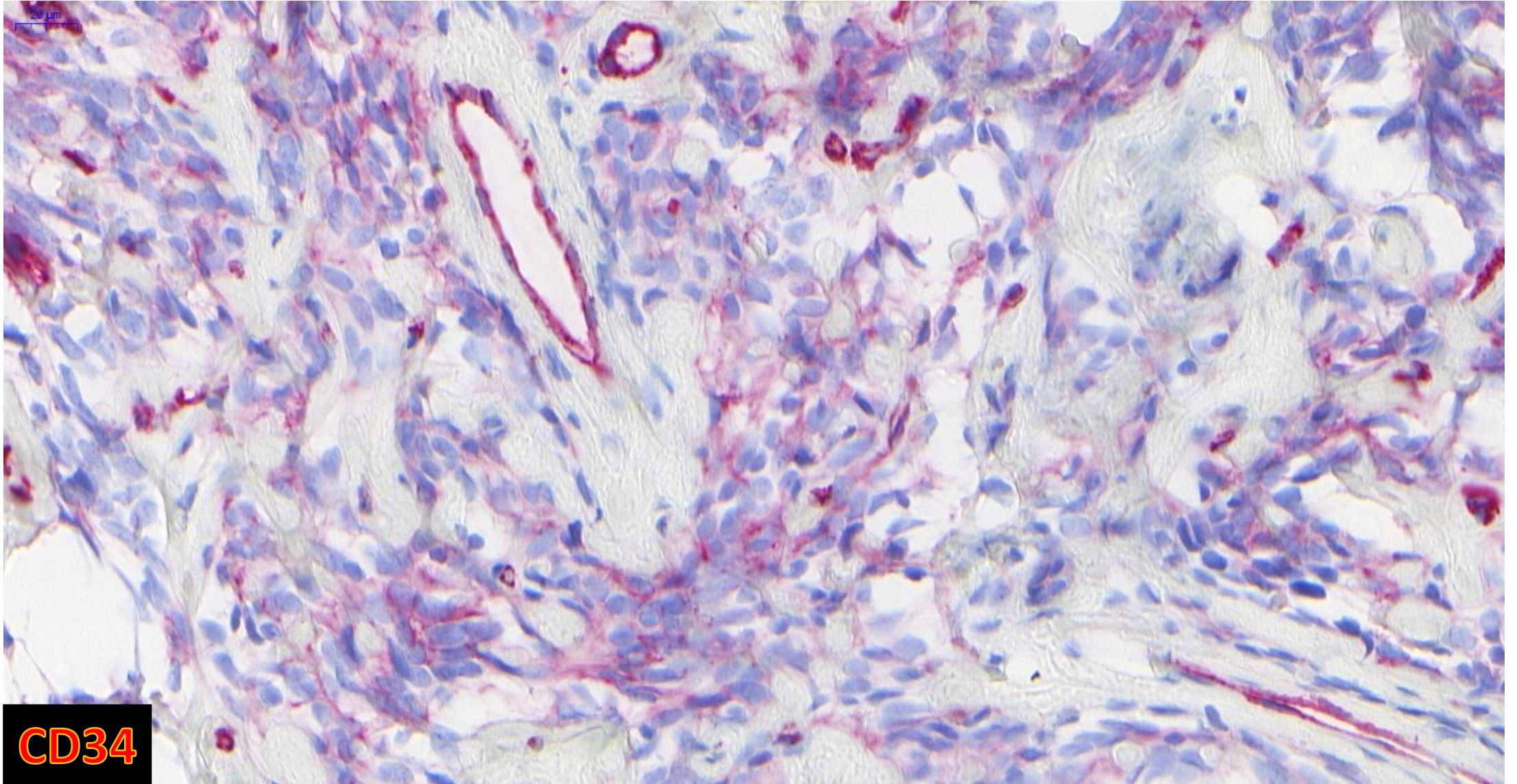




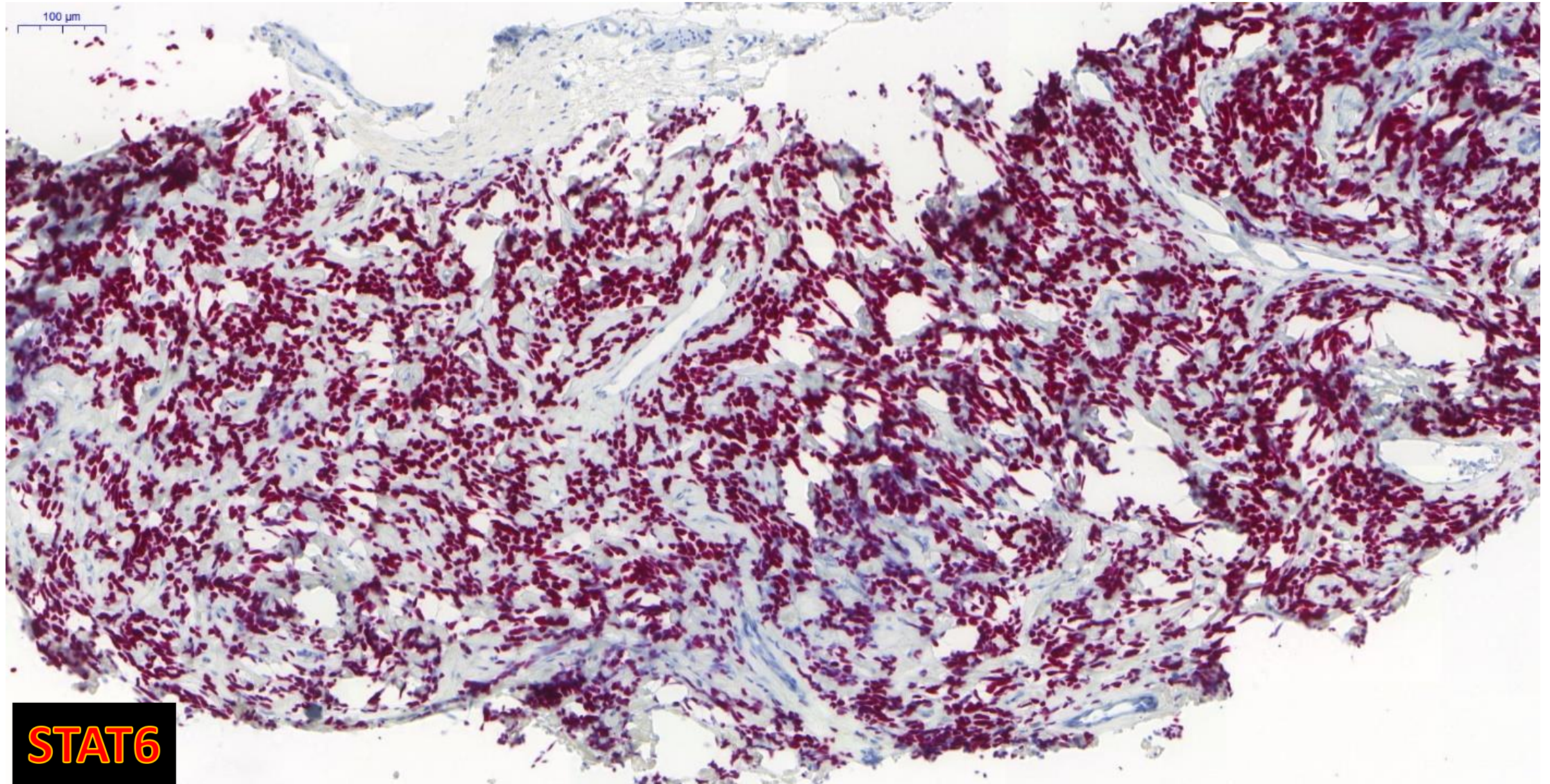
50 μm

?

# Imunohistochemia



# Imunohistochemia



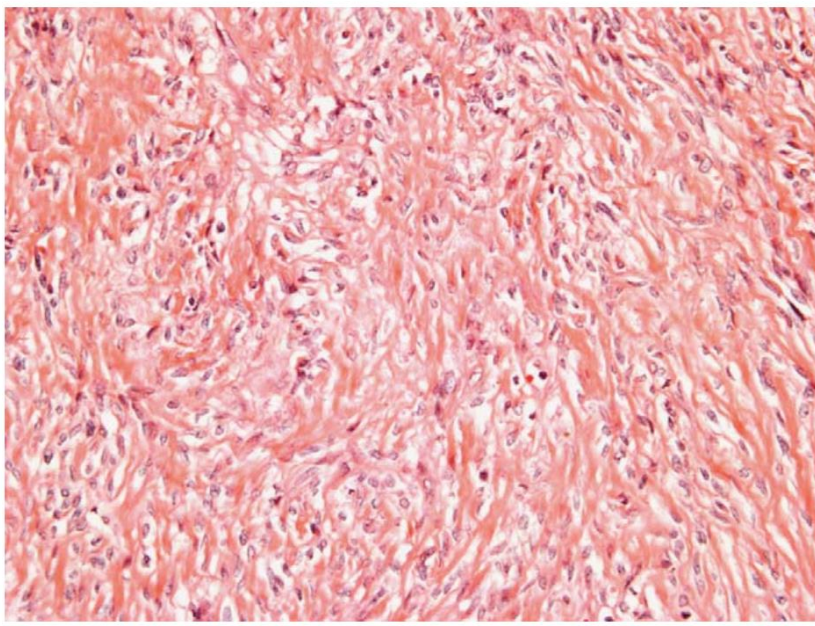
# Solitary Fibrous Tumor on Needle Biopsy and Transurethral Resection of the Prostate

## *A Clinicopathologic Study of 13 Cases*

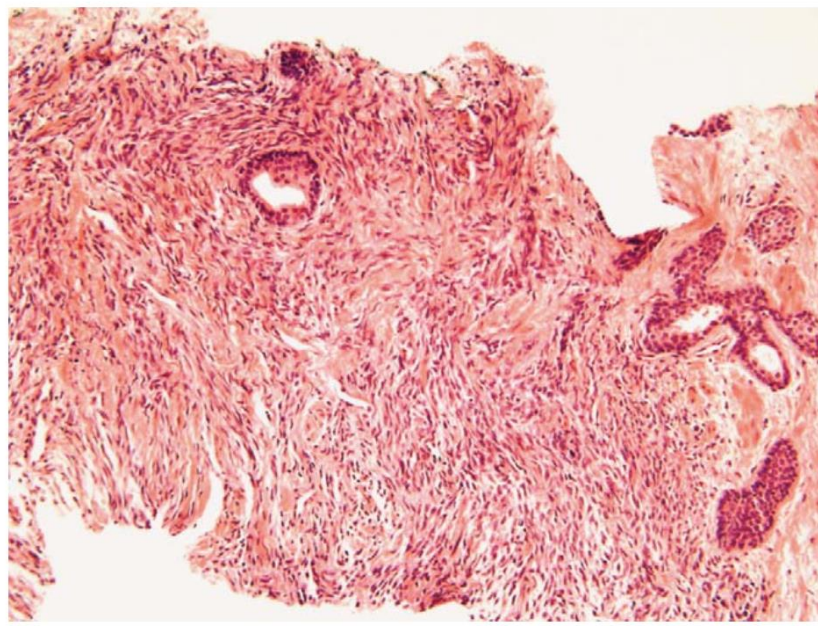
*Mehsati Herawi, MD, PhD\* and Jonathan I. Epstein, MD\* † ‡*

Am J Surg Pathol 2007;31:870–876

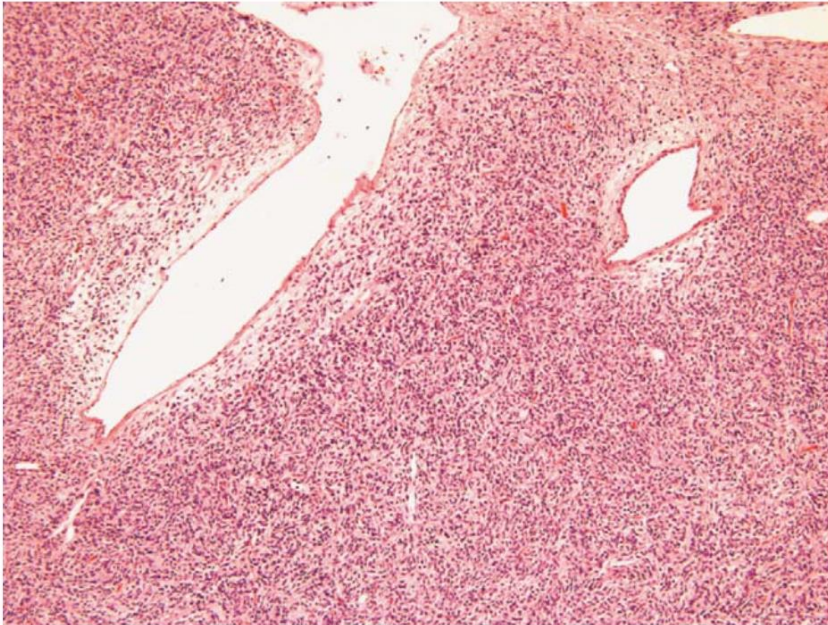
- jeden z najvzácnejších nádorov prostaty v ihlovej biopsii/TUR
- priemerný vek 63 rokov (43-75 rokov)
- 10 prípadov skutočne v prostate
- 4 klasifikované ako malígne SFT (celularita, mitózy, nekrózy, pleomorfia, infiltrácia), 2 ako borderline
- CD34, BCL2, CD99, beta-catenin (5/10)



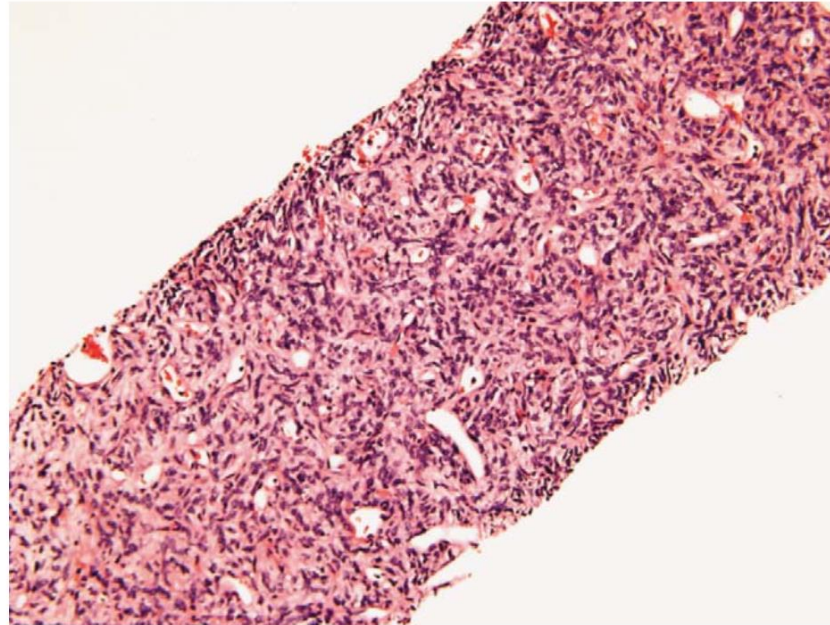
**FIGURE 3.** SFT with wirelike collagenous deposits.



**FIGURE 5.** SFT infiltrating around benign prostatic glands on prostate needle biopsy.



**FIGURE 4.** SFT with hemangiopericytomatous vascular pattern.



**FIGURE 6.** Hypercellularity in a case of malignant SFT on prostatic needle biopsy.



# DDx: mezenchymálne lézie prostaty

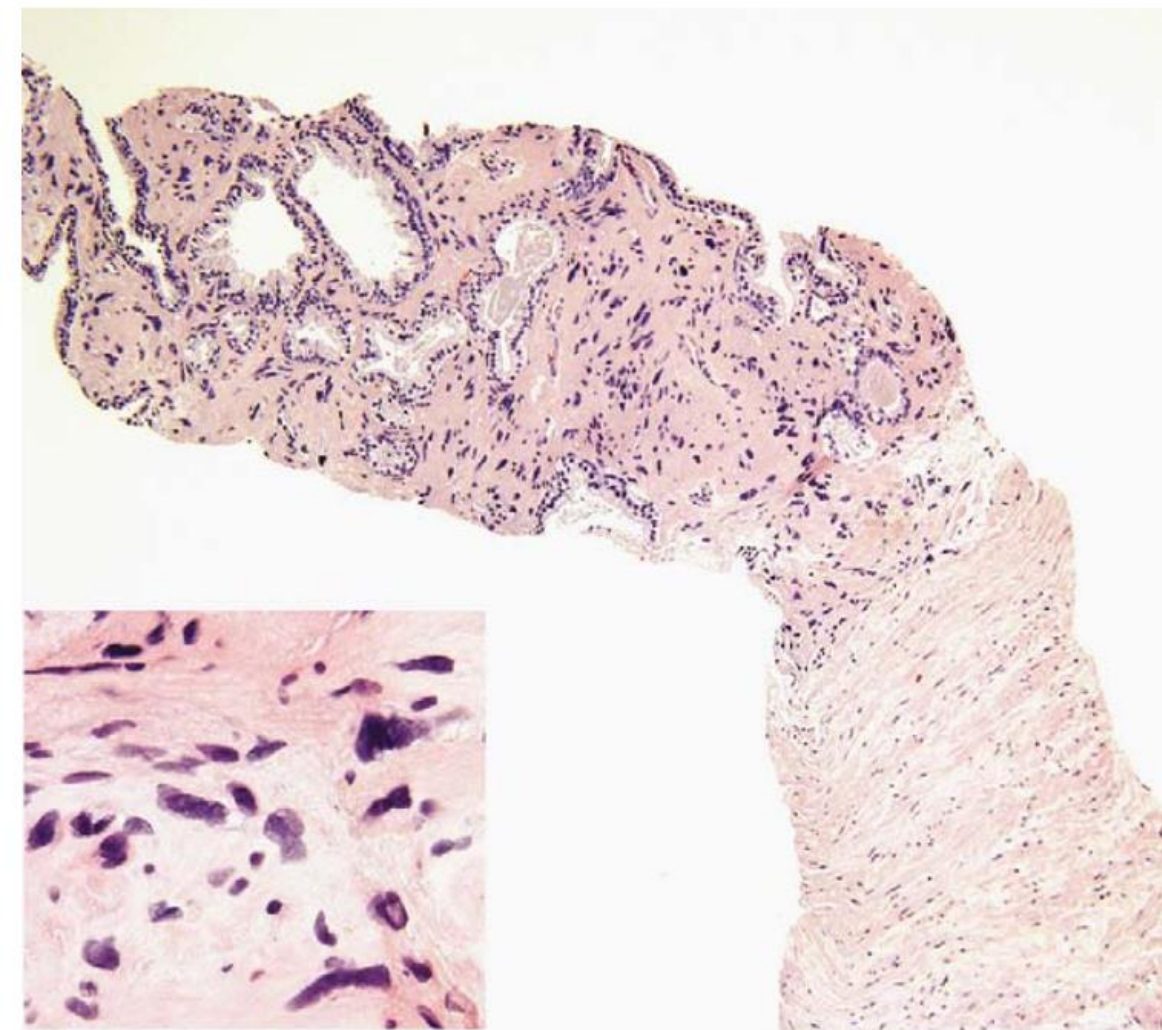
## Mesenchymal tumours

Stromal tumour of uncertain malignant potential	8935/1	CD34+/-, SMA-/+, Desmin-/+
Stromal sarcoma	8935/3	CD34+/-, SMA-/+, Desmin-/+
Leiomyosarcoma	8890/3	SMA, Desmin, caldesmon
Rhabdomyosarcoma	8900/3	Desmin, myogenin, MyoD1, PAX7
Leiomyoma	8890/0	SMA, Desmin, caldesmon
Angiosarcoma	9120/3	
Synovial sarcoma	9040/3	
Inflammatory myofibroblastic tumour	8825/1	
Osteosarcoma	9180/3	
Undifferentiated pleomorphic sarcoma	8802/3	
Solitary fibrous tumour	8815/1	STAT6, CD34, BCL2, CD99, SMA-/+
Solitary fibrous tumour, malignant	8815/3	
Haemangioma	9120/0	
Granular cell tumour	9580/0	GIST: CD117, DOG1, CD34, SMA+/-, desmin+/-, S100+/-

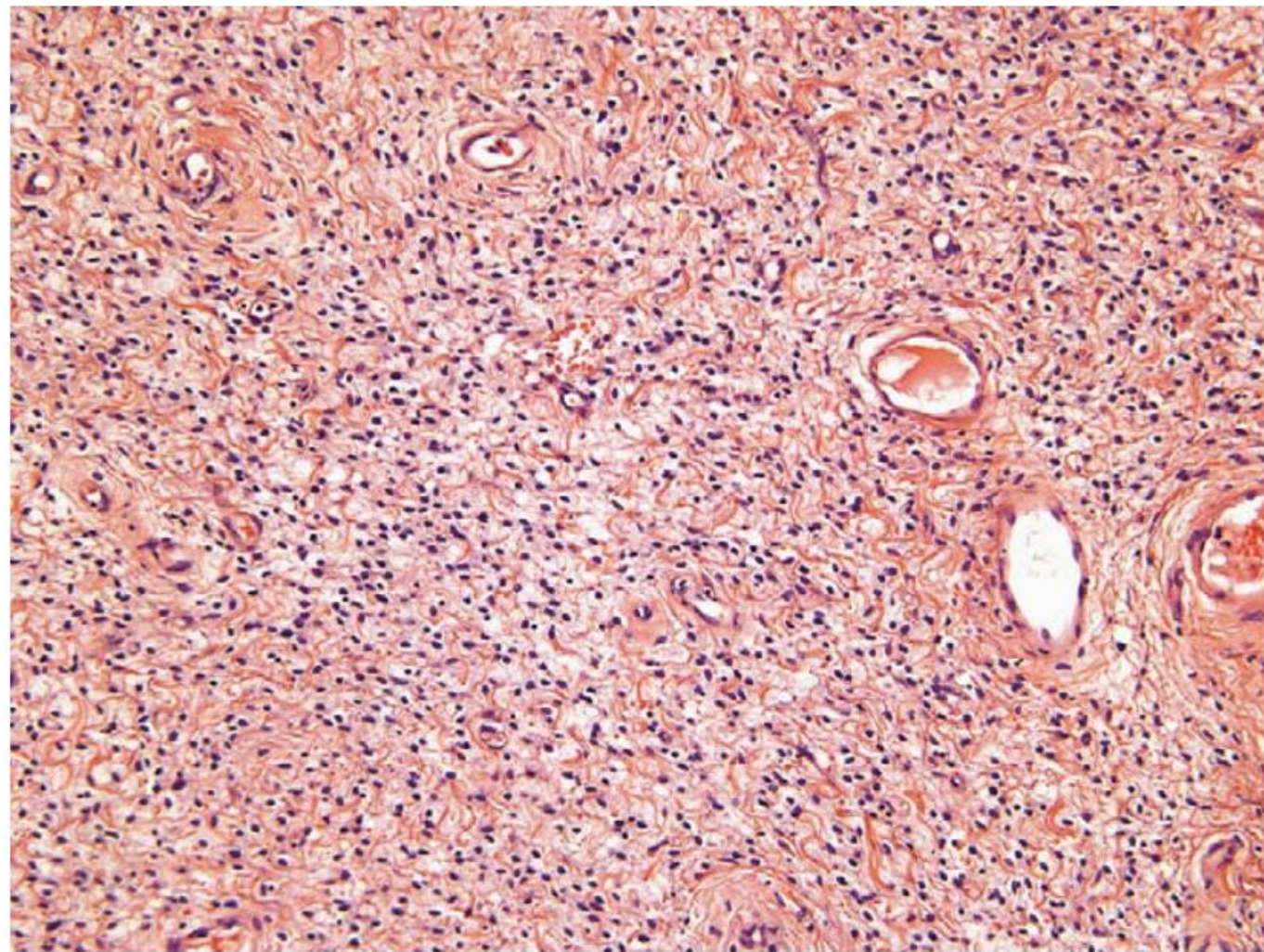
# Specialized Stromal Tumors of the Prostate: A Clinicopathologic Study of 50 Cases

*Mehsati Herawi, MD, PhD\* and Jonathan I. Epstein, MD\* † ‡*

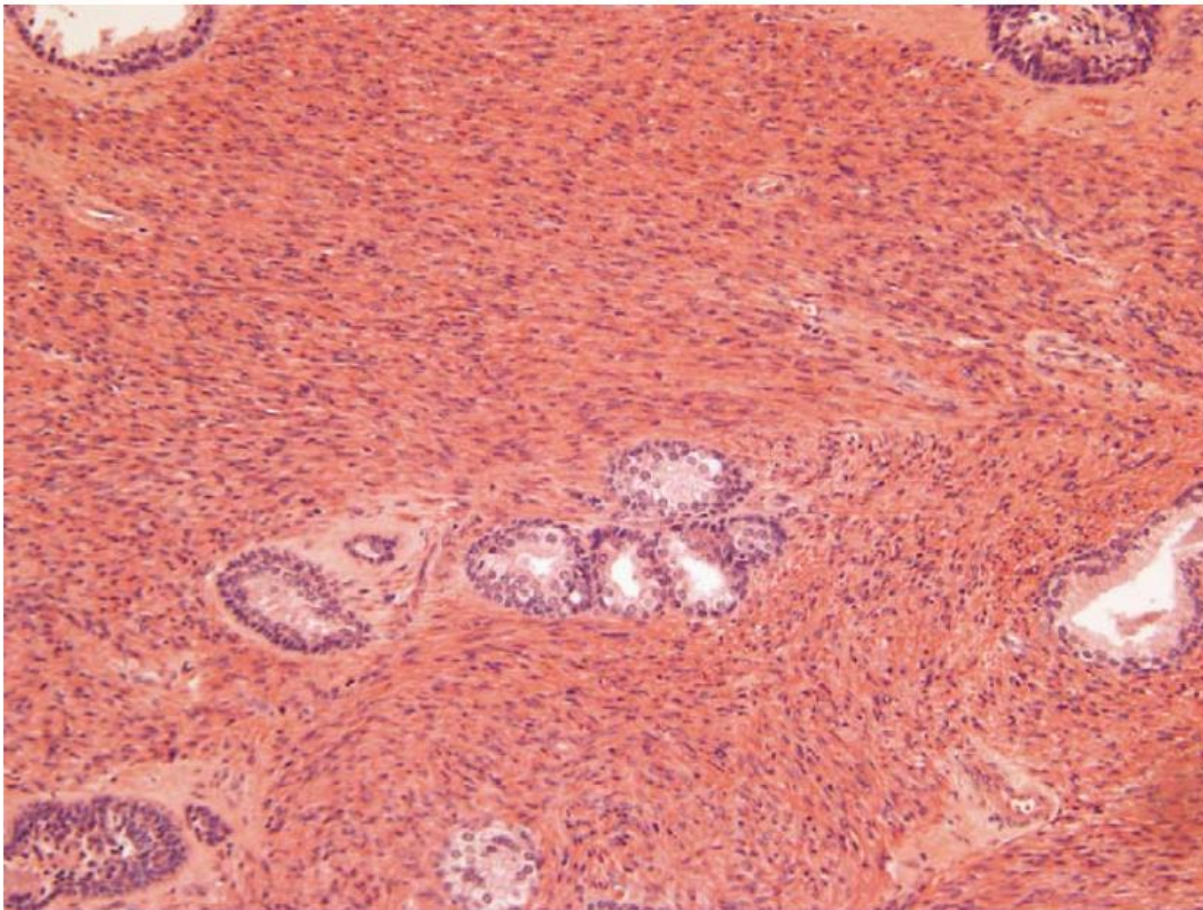
- STUMP
  - „pattern“ s degeneratívnymi atypiami
  - hypercelulárny „pattern“
  - myxoidný „pattern“
  - „phyllodes-like pattern“
  - zmiešaný „pattern“
- Prostatický stromálny sarkóm
  - stredný až výrazný stupeň atypií, mitózy, hypercelularita



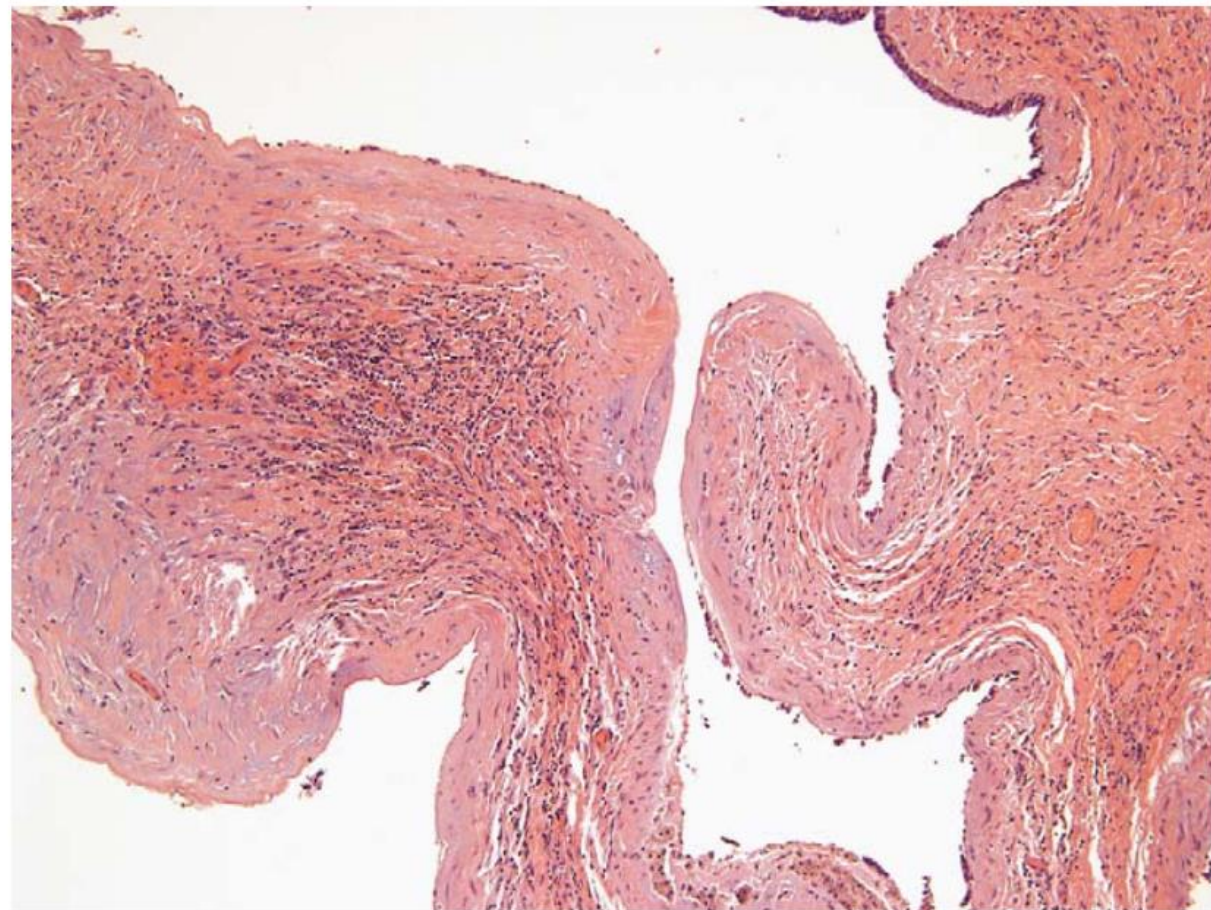
**FIGURE 3.** "Degenerative atypia" pattern of STUMP.



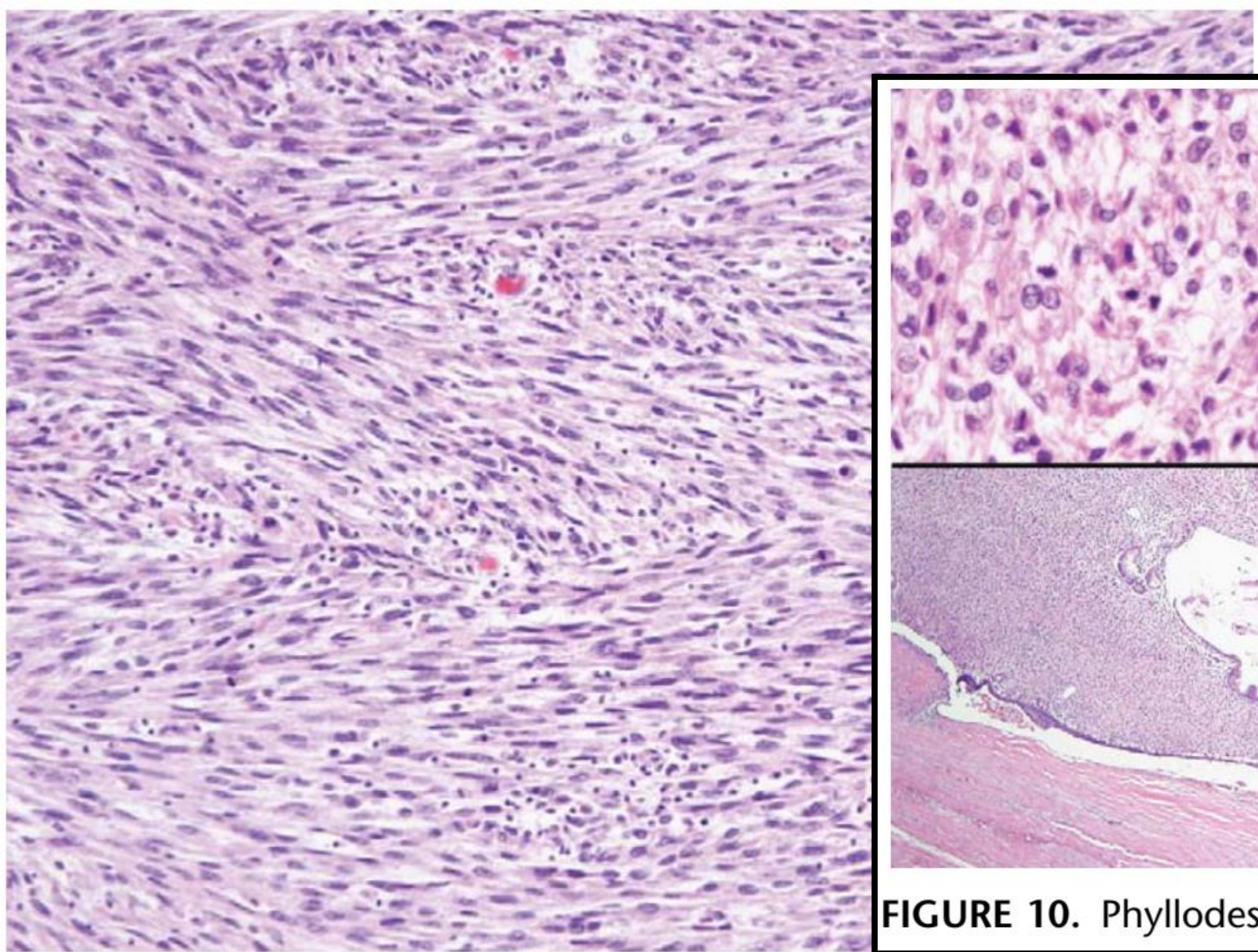
**FIGURE 5.** "Myxoid" pattern of STUMP.



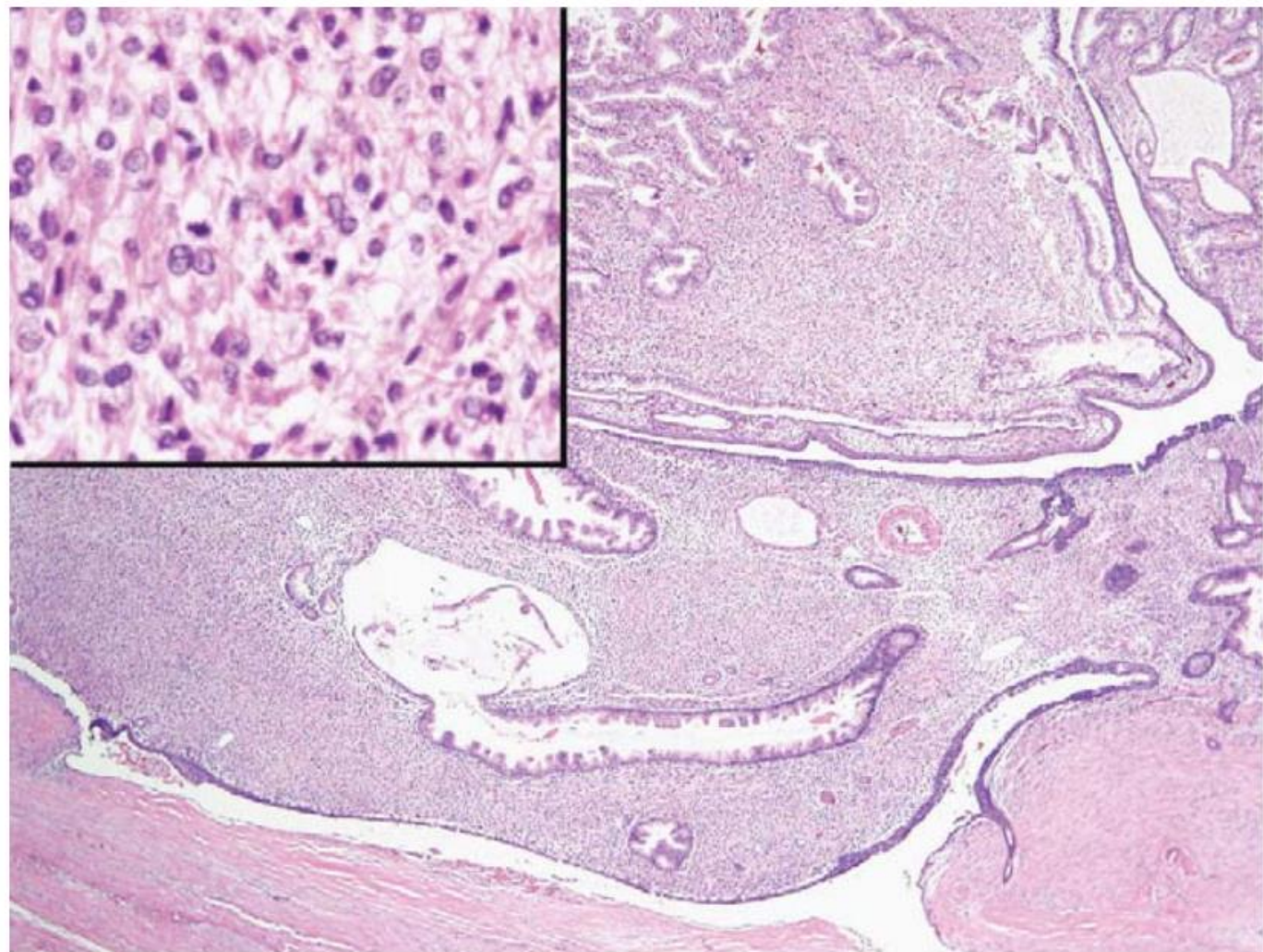
**FIGURE 4.** "Hypercellular" pattern of STUMP.



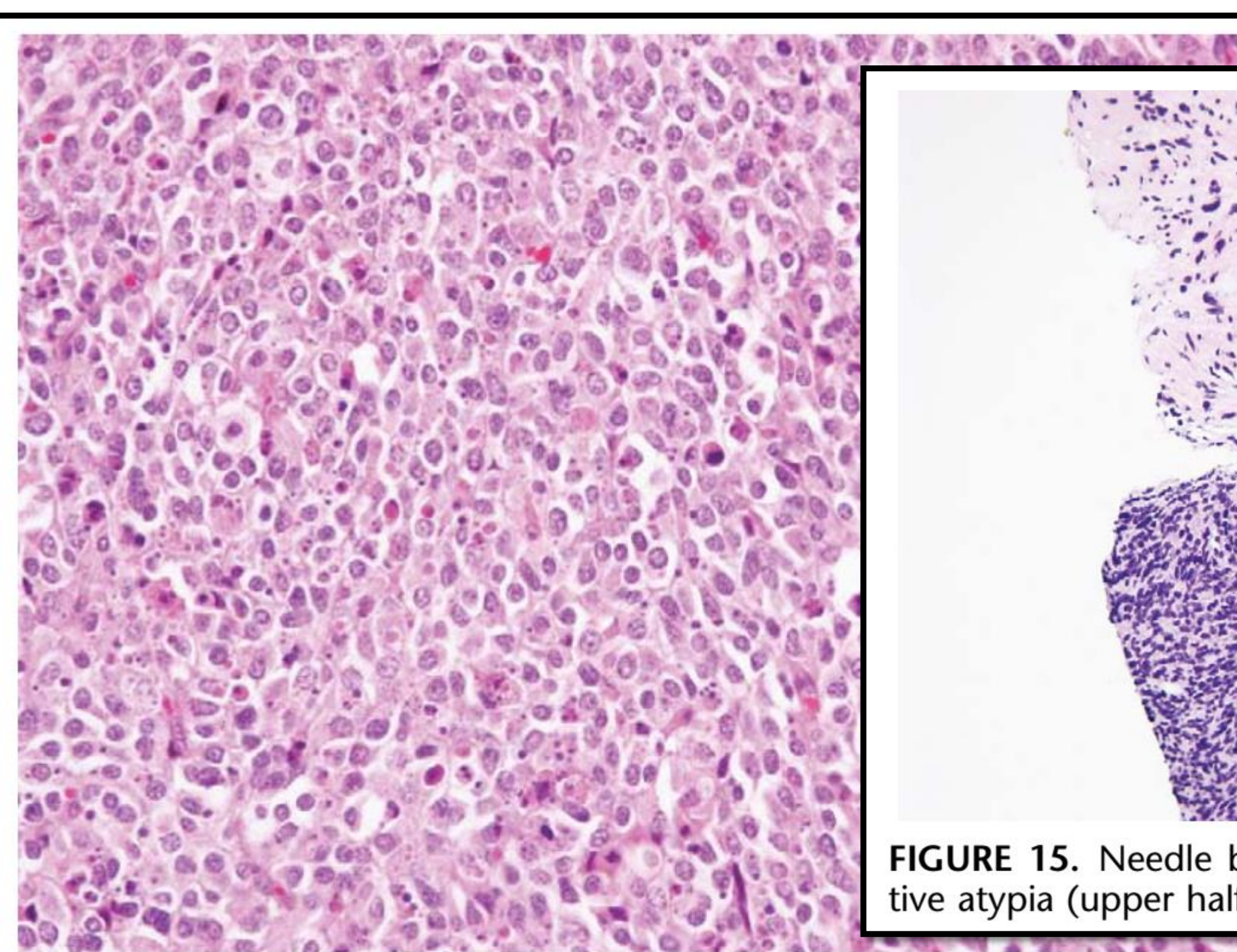
**FIGURE 6.** "Phyllodes" pattern of STUMP.



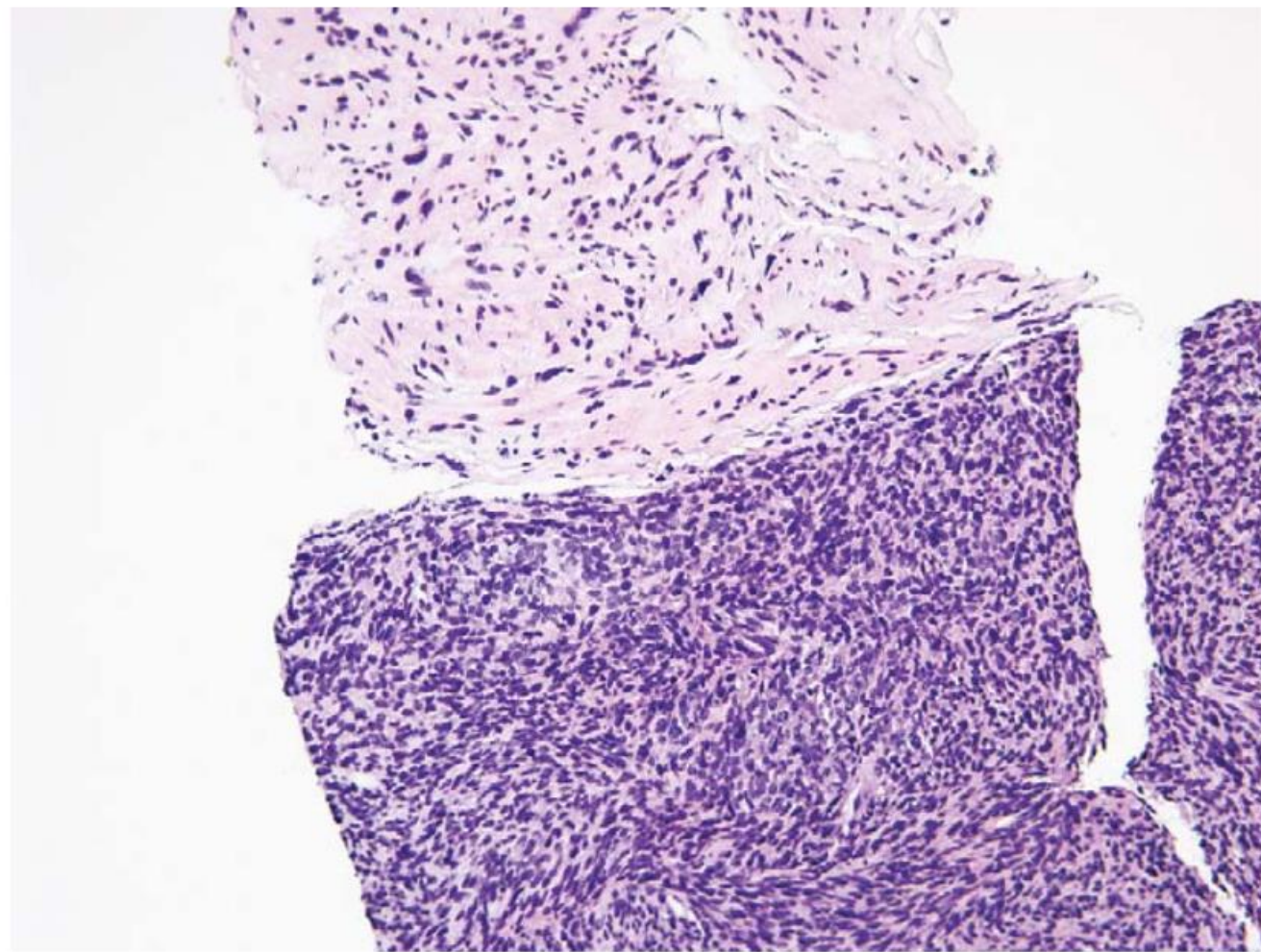
**FIGURE 8.** Fibrosarcomatous pattern of stromal sarcoma.



**FIGURE 10.** Phyllodes pattern of stromal sarcoma.



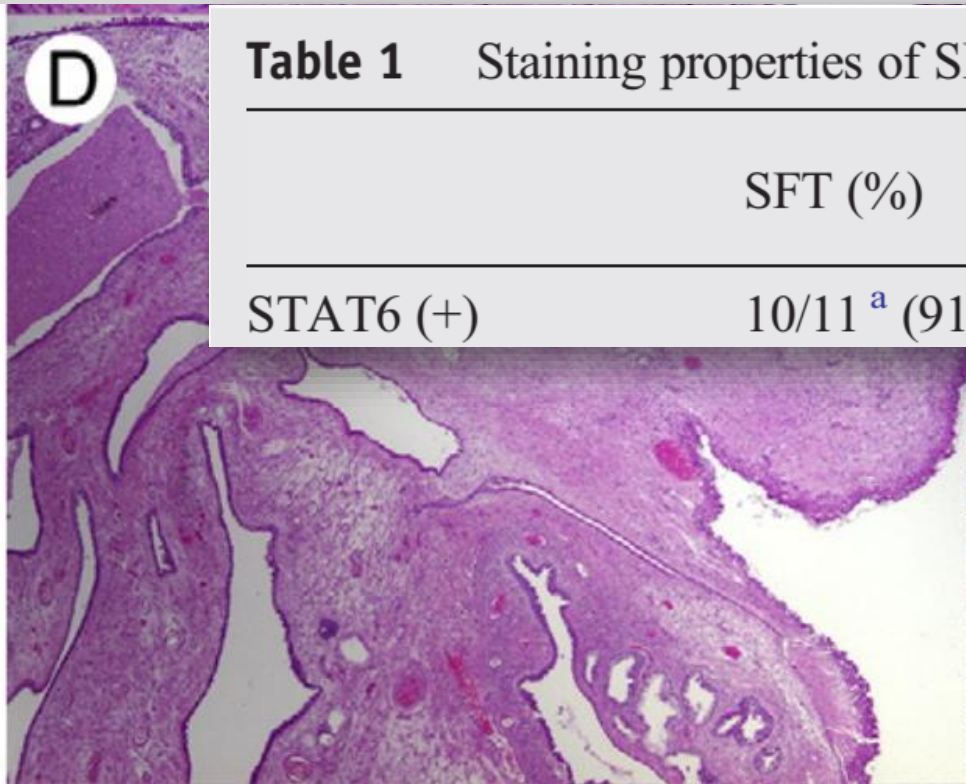
**FIGURE 11.** Epithelioid pattern of stromal sarcoma.



**FIGURE 15.** Needle biopsy showing STUMP with degenerative atypia (upper half) and HG sarcoma (lower half).


# The utility of STAT6 and ALDH1 expression in the differential diagnosis of solitary fibrous tumor versus prostate-specific stromal neoplasms ☆, ☆ ☆, ☆

Gunes Guner MD<sup>a</sup>, Justin A. Bishop MD<sup>a</sup>, Stephania M. Bezerra MD<sup>a</sup>, Diana Taheri MD<sup>a, b</sup>, David J. Zahavi MS, BS<sup>a</sup>, Maria Angelica Mendoza Rodriguez MD<sup>a</sup>, Rajni Sharma PhD<sup>a</sup>, Jonathan I. Epstein MD<sup>a</sup>, George J. Netto MD<sup>\*, a</sup>



**Table 1** Staining properties of SFT, STUMP, and PSS

	SFT (%)	STUMP (%)	Stromal sarcoma (n)
STAT6 (+)	10/11 <sup>a</sup> (91)	4/16 (25)	0/4 (0)



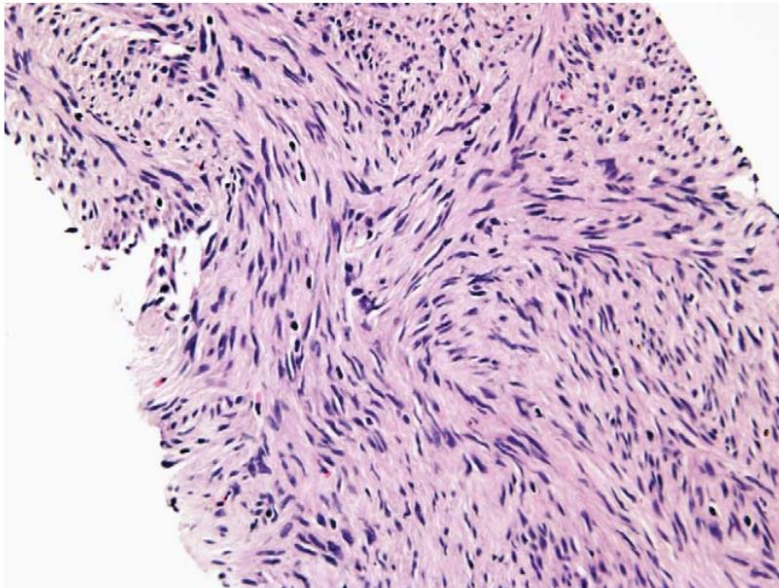
?

# Gastrointestinal Stromal Tumors (GISTs) on Prostate Needle Biopsy

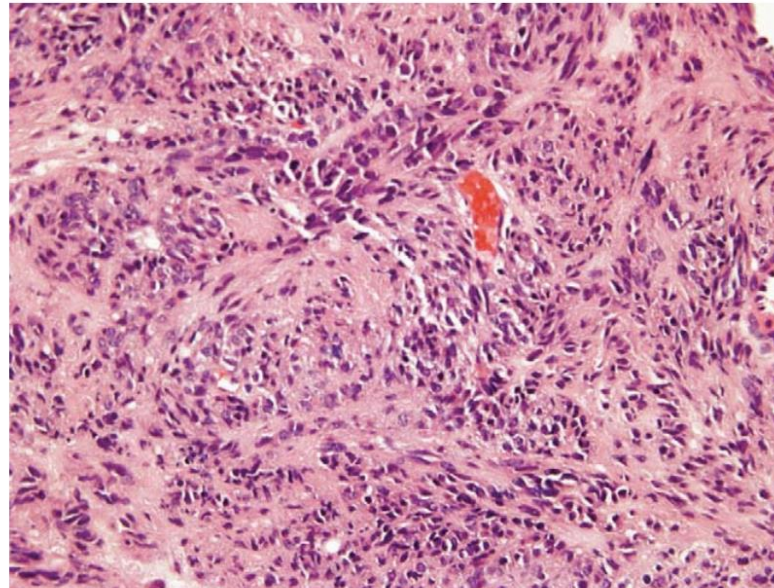
## *A Clinicopathologic Study of 8 Cases*

*Mehsati Herawi, MD, PhD,\* Elizabeth A. Montgomery, MD,\* and Jonathan I. Epstein, MD\* † ‡*

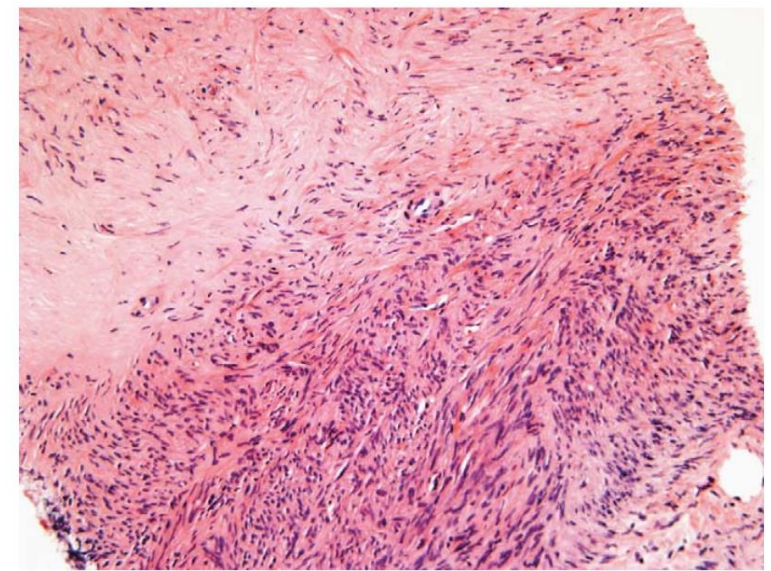
Am J Surg Pathol 2006;30:1389–1395



**FIGURE 2.** GIST on needle biopsy with spindle cell morphology.



**FIGURE 3.** GIST on needle biopsy with epithelioid features.

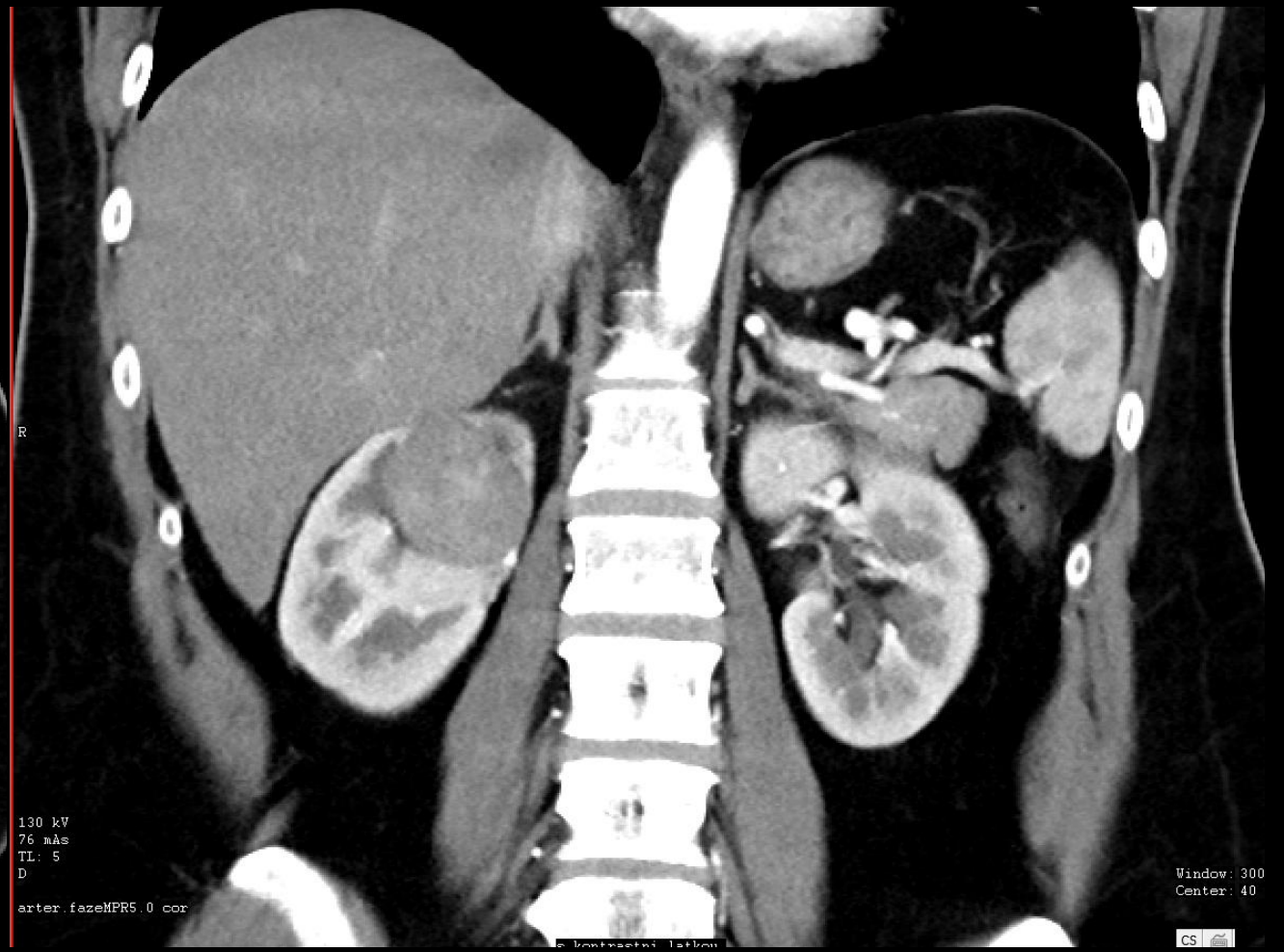


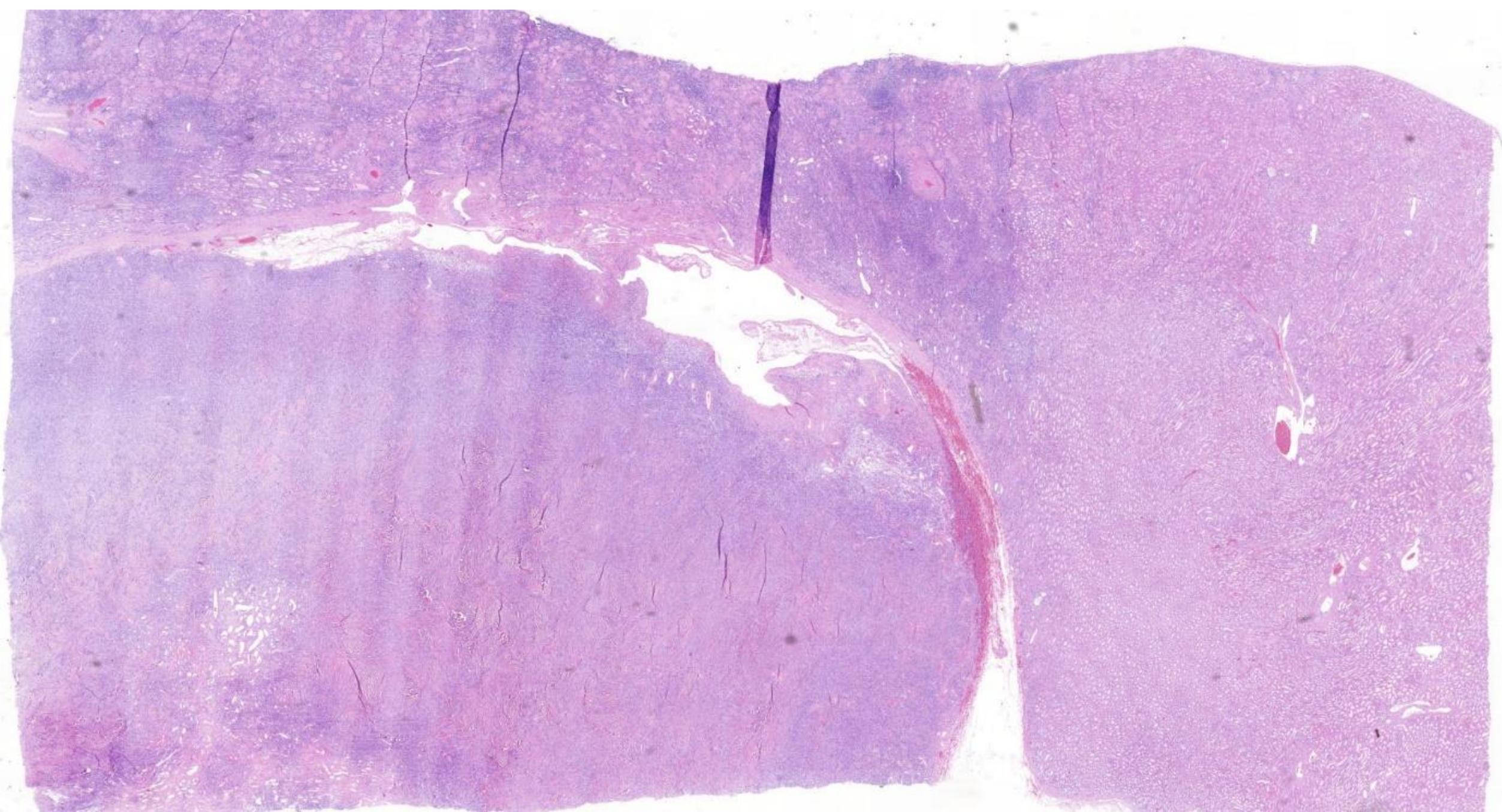
**FIGURE 4.** GIST on needle biopsy with areas of dense collagen.

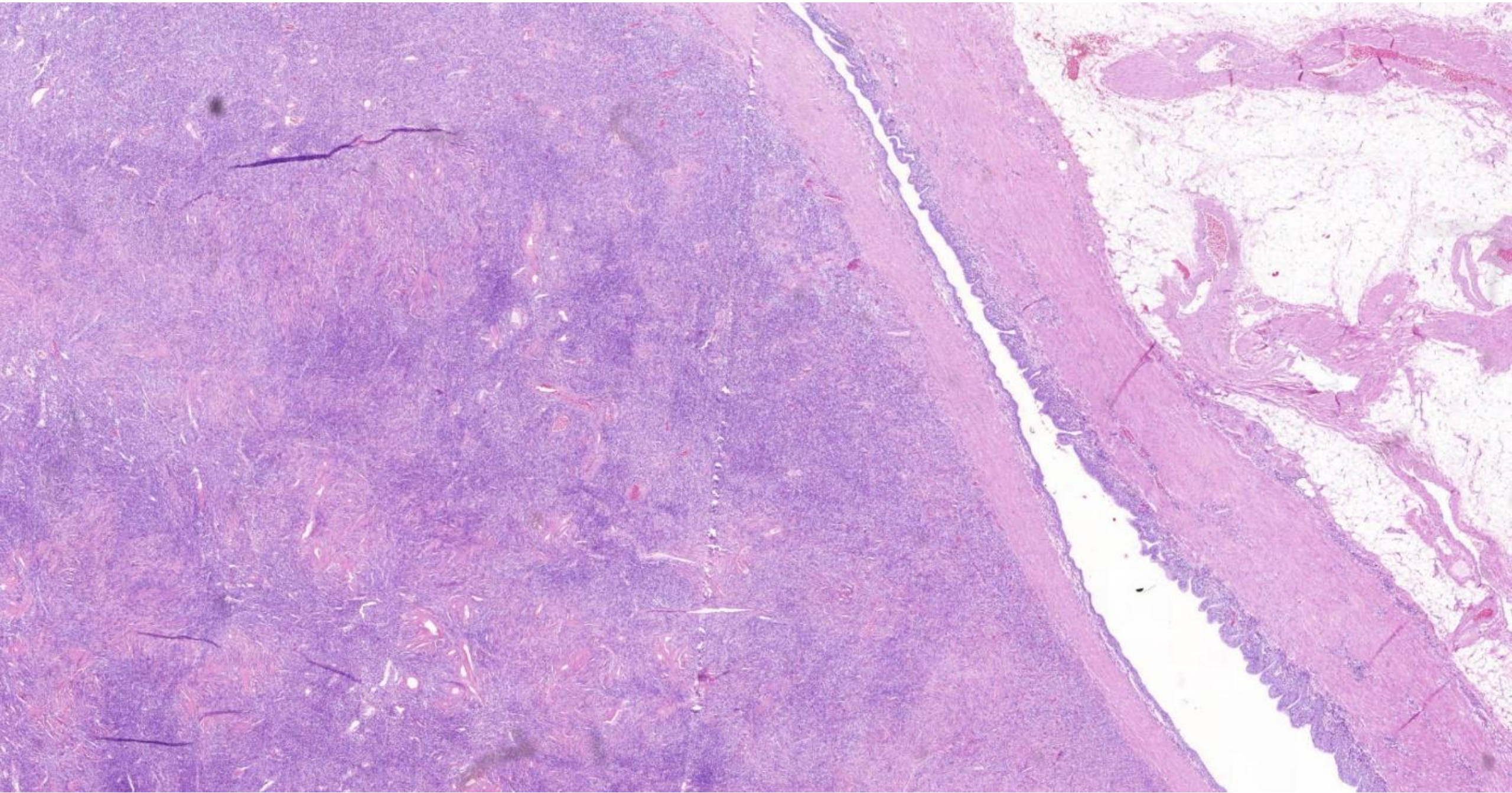


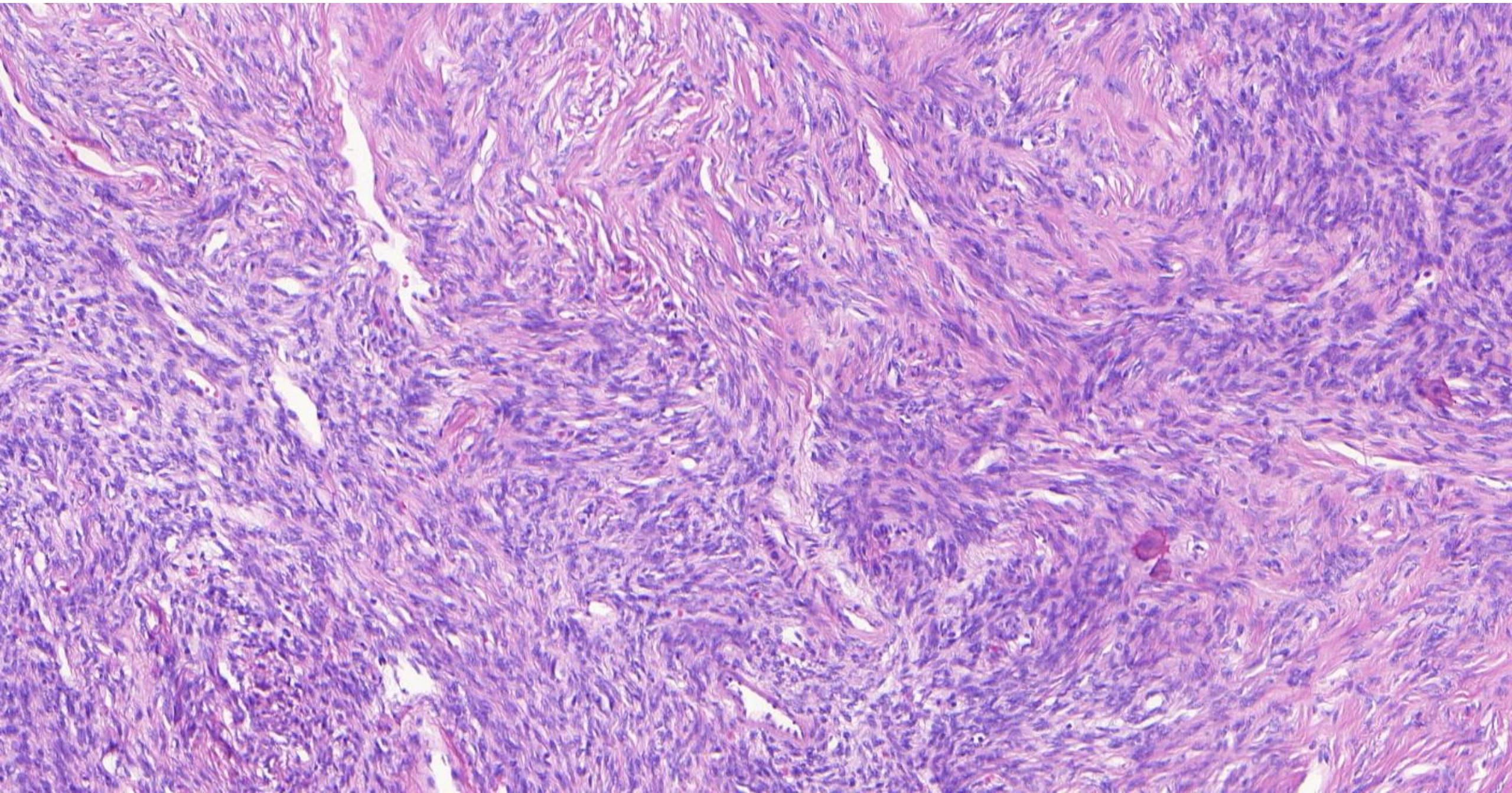
# 35-ročná žena

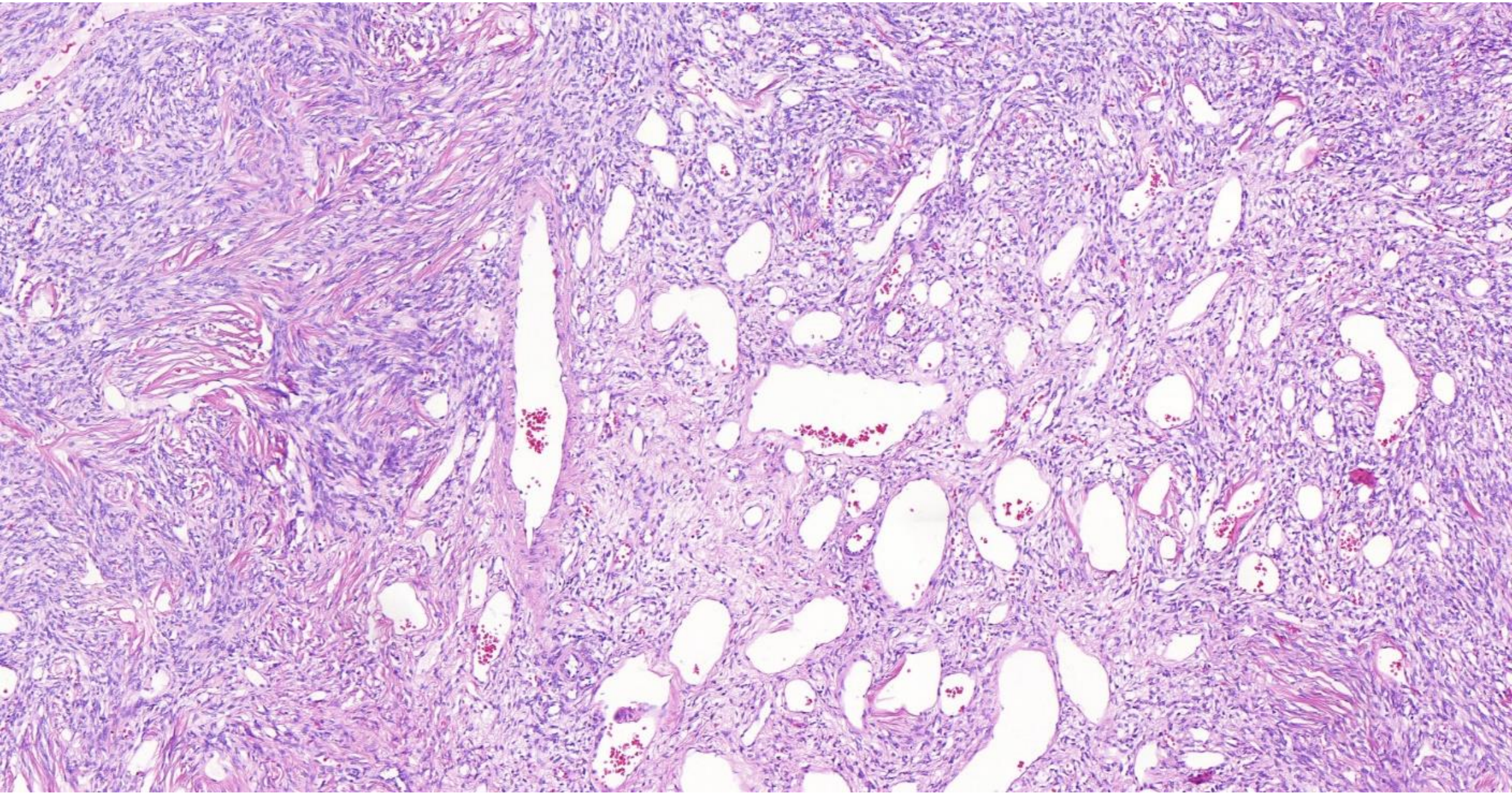
- Tumor pravé ledviny
- při jednom z pólu v ledvině zastižen objemný výrazně ostře ohraničený tuhý bělavý tumor souhrnných rozměrů 4,5x3,5x4 cm
- tumor se expanzivně vyklenuje do oblasti renálního sinu, tukové struktury renálního sinu však tumor makroskopicky neinfiltuje



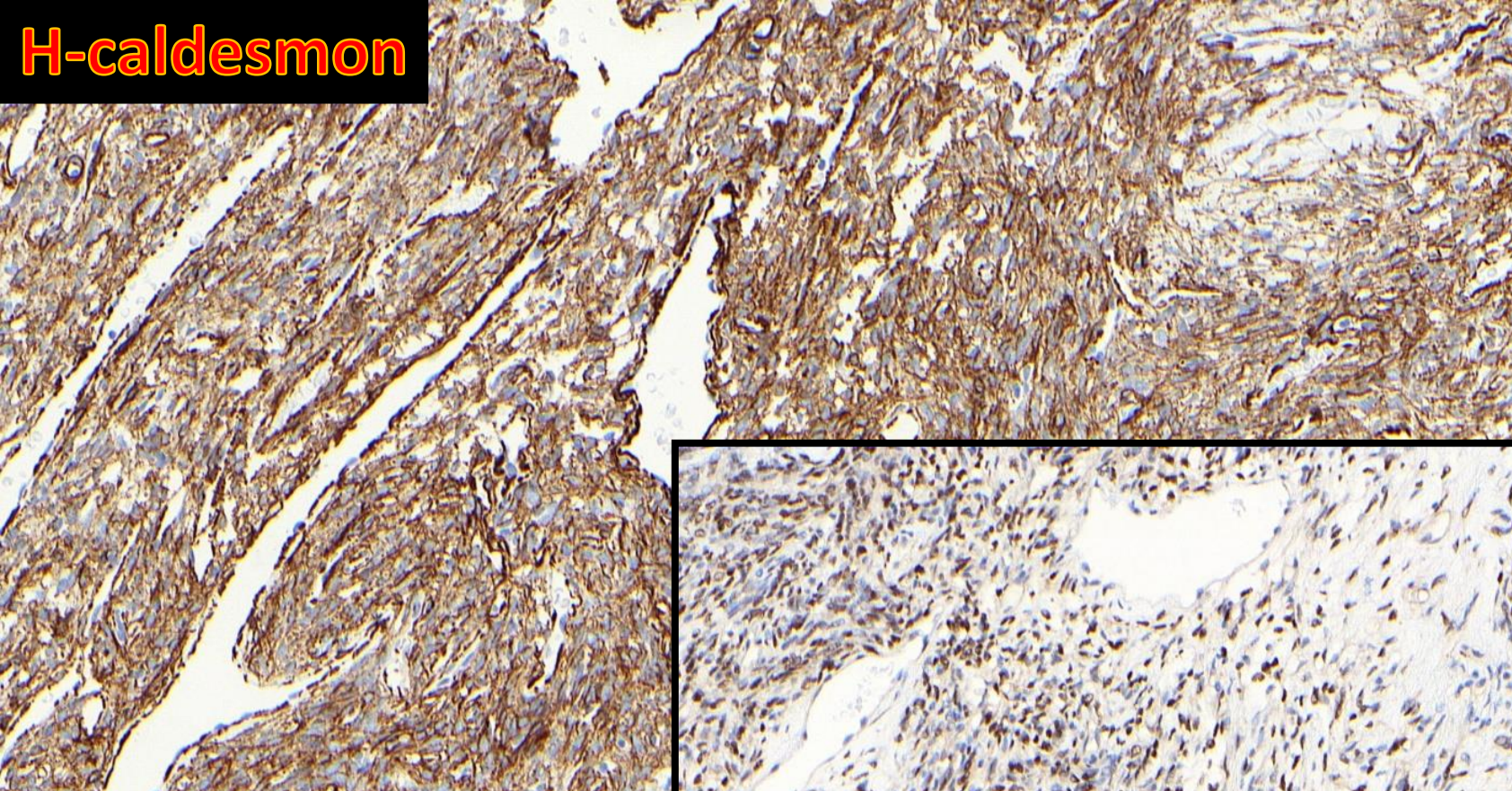




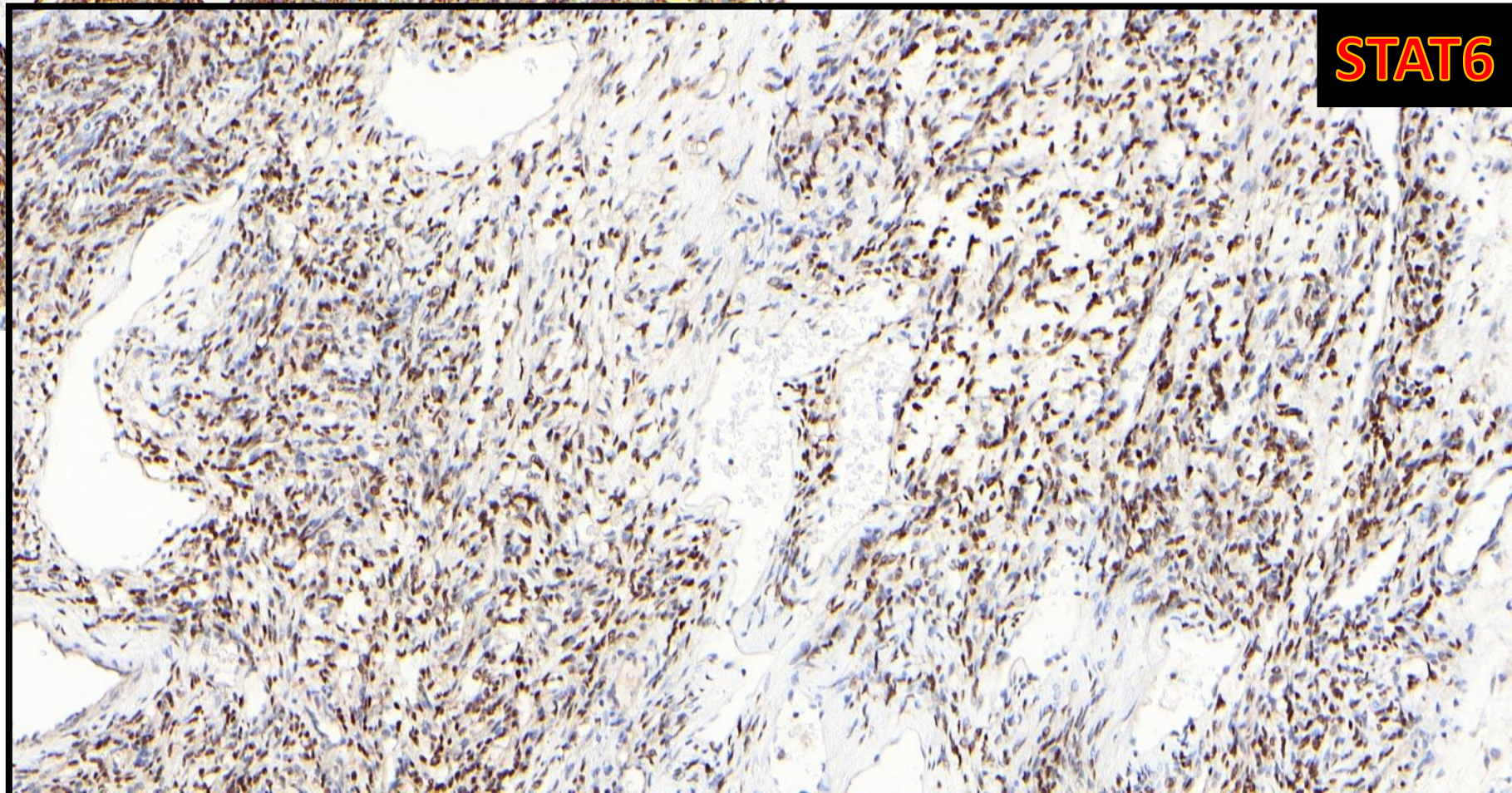




**H-caldesmon**



**STAT6**



Ďakujem za pozornosť

[svajdler@yahoo.com](mailto:svajdler@yahoo.com)

[svajdler@biopticka.cz](mailto:svajdler@biopticka.cz)